

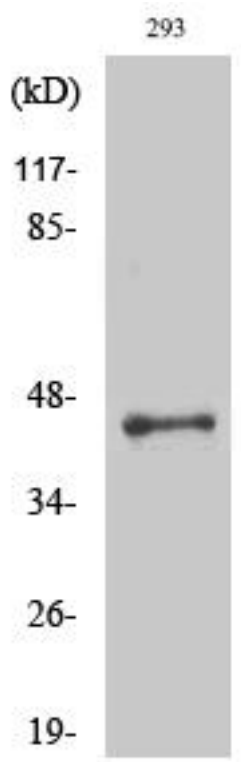


LUC7L2 Monoclonal Antibody

Catalog No	YP-mAb-01849
Isotype	IgG
Reactivity	Human;Mouse;Rat
Applications	WB
Gene Name	LUC7L2
Protein Name	Putative RNA-binding protein Luc7-like 2
Immunogen	The antiserum was produced against synthesized peptide derived from human LUC7L2. AA range:129-178
Specificity	LUC7L2 Monoclonal Antibody detects endogenous levels of LUC7L2 protein.
Formulation	Liquid in PBS containing 50% glycerol, 0.5% BSA and 0.02% sodium azide.
Source	Monoclonal, Mouse,IgG
Purification	The antibody was affinity-purified from mouse antiserum by affinity-chromatography using epitope-specific immunogen.
Dilution	WB 1:500-1:2000
Concentration	1 mg/ml
Purity	≥90%
Storage Stability	-20°C/1 year
Synonyms	LUC7L2; CGI-59; CGI-74; Putative RNA-binding protein Luc7-like 2
Observed Band	47kD
Cell Pathway	Nucleus speckle . Nucleus, nucleoplasm . Colocalizes with SCNM1 and SNRNP70 in nuclear speckles. .
Tissue Specificity	Brain,Epithelium,Skin,Uterus,
Function	function:May bind to RNA via its Arg/Ser-rich domain.,PTM:Phosphorylated upon DNA damage, probably by ATM or ATR.,similarity:Belongs to the Luc7 family.,similarity:Contains 1 C2H2-type zinc finger.,
Background	This gene encodes a protein that contains a C2H2-type zinc finger, coiled-coil region and arginine, serine-rich (RS) domain. A similar protein in mouse interacts with sodium channel modifier 1, and the encoded protein may be involved in the recognition of non-consensus splice donor sites in association with the U1 snRNP spliceosomal subunit. Alternatively spliced transcript variants encoding multiple isoforms have been observed for this gene. [provided by RefSeq, Sep 2011],
matters needing attention	Avoid repeated freezing and thawing!

**Usage suggestions**

This product can be used in immunological reaction related experiments. For more information, please consult technical personnel.

Products Images

Western Blot analysis of various cells using LUC7L2 Monoclonal Antibody