



JMY Monoclonal Antibody

Catalog No	YP-mAb-01836
Isotype	IgG
Reactivity	Human;Mouse
Applications	WB
Gene Name	JMY
Protein Name	Junction-mediating and -regulatory protein
Immunogen	The antiserum was produced against synthesized peptide derived from human JMY. AA range:931-980
Specificity	JMY Monoclonal Antibody detects endogenous levels of JMY protein.
Formulation	Liquid in PBS containing 50% glycerol, 0.5% BSA and 0.02% sodium azide.
Source	Monoclonal, Mouse,IgG
Purification	The antibody was affinity-purified from mouse antiserum by affinity-chromatography using epitope-specific immunogen.
Dilution	WB 1:500-1:2000
Concentration	1 mg/ml
Purity	≥90%
Storage Stability	-20°C/1 year
Synonyms	JMY; Junction-mediating and -regulatory protein
Observed Band	130kD
Cell Pathway	Nucleus . Cytoplasmic vesicle . Cytoplasm, cytoskeleton . Endomembrane system; Lipid-anchor. Cytoplasmic vesicle, autophagosome membrane . Localizes to the nucleus in most cell types. Accumulates in nucleus under DNA damage conditions, increasing p53/TP53 transcription response and reducing its influence on cell motility (By similarity). In primary neutrophils, it colocalizes with actin filaments at the leading edge and is excluded from the nucleus. Localization correlates with motility, because it moves from the nucleus to the cytoplasmic compartment when cells are differentiated from nonmotile cells into highly motile neutrophil-like cells. Localizes to cytoplasmic vesicles which associate with actin filament and autophagosomal membranes upon starvation-induced autophagy (PubMed:30420355)
Tissue Specificity	Brain,Substantia nigra,
Function	function:Cofactor that increases p53/TP53 response via its interaction with p300/EP300. Increases p53/TP53-dependent transcription and apoptosis, suggesting an important role in p53/TP53 stress response such as DNA damage.,induction:By E2F.,PTM:Ubiquitinated by MDM2, leading to its subsequent degradation by the proteasome. In case of DNA damage, the interaction with MDM2 is altered, preventing degradation and allowing interaction



with p300/EP300 and its function in p53/TP53 stress response.,similarity:Contains 1 WH2 domain.,subunit:Interacts with p300/EP300, the complex being recruited to activated p53/TP53. Interacts with TTC5.,

Background

function:Cofactor that increases p53/TP53 response via its interaction with p300/EP300. Increases p53/TP53-dependent transcription and apoptosis, suggesting an important role in p53/TP53 stress response such as DNA damage.,induction:By E2F.,PTM:Ubiquitinated by MDM2, leading to its subsequent degradation by the proteasome. In case of DNA damage, the interaction with MDM2 is altered, preventing degradation and allowing interaction with p300/EP300 and its function in p53/TP53 stress response.,similarity:Contains 1 WH2 domain.,subunit:Interacts with p300/EP300, the complex being recruited to activated p53/TP53. Interacts with TTC5.,

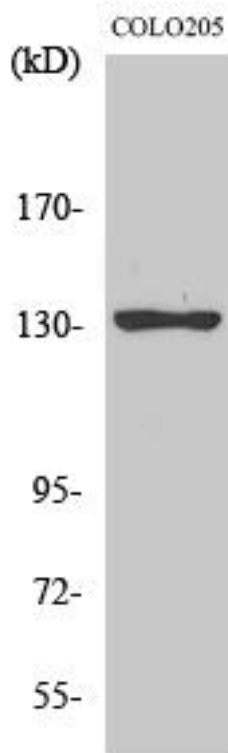
matters needing attention

Avoid repeated freezing and thawing!

Usage suggestions

This product can be used in immunological reaction related experiments. For more information, please consult technical personnel.

Products Images



Western Blot analysis of various cells using JMY Monoclonal Antibody