

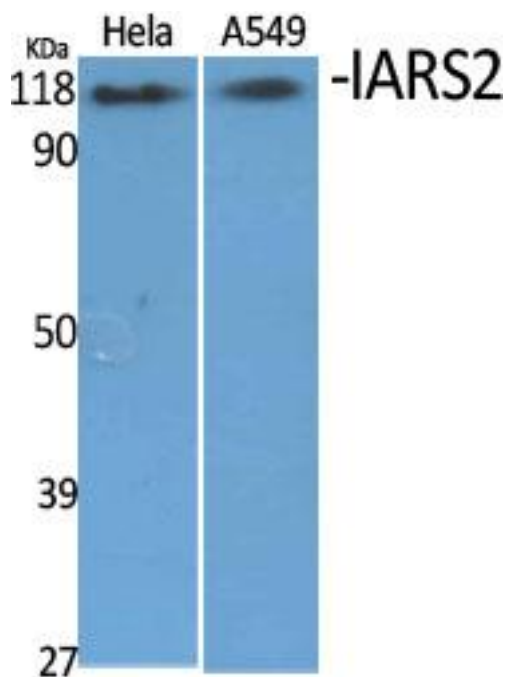


IARS2 Monoclonal Antibody

Catalog No	YP-mAb-01821
Isotype	IgG
Reactivity	Human;Mouse;Monkey
Applications	WB
Gene Name	IARS2
Protein Name	Isoleucine--tRNA ligase mitochondrial
Immunogen	The antiserum was produced against synthesized peptide derived from human IARS2. AA range:71-120
Specificity	IARS2 Monoclonal Antibody detects endogenous levels of IARS2 protein.
Formulation	Liquid in PBS containing 50% glycerol, 0.5% BSA and 0.02% sodium azide.
Source	Monoclonal, Mouse,IgG
Purification	The antibody was affinity-purified from mouse antiserum by affinity-chromatography using epitope-specific immunogen.
Dilution	WB 1:500-1:2000
Concentration	1 mg/ml
Purity	≥90%
Storage Stability	-20°C/1 year
Synonyms	IARS2; Isoleucine--tRNA ligase; mitochondrial; Isoleucyl-tRNA synthetase; IleRS
Observed Band	114kD
Cell Pathway	Mitochondrion matrix .
Tissue Specificity	Brain,Epithelium,Liver,Placenta,Skin,
Function	catalytic activity:ATP + L-isoleucine + tRNA(Ile) = AMP + diphosphate + L-isoleucyl-tRNA(Ile).,similarity:Belongs to the class-I aminoacyl-tRNA synthetase family.,
Background	Aminoacyl-tRNA synthetases catalyze the aminoacylation of tRNA by their cognate amino acid. Because of their central role in linking amino acids with nucleotide triplets contained in tRNAs, aminoacyl-tRNA synthetases are thought to be among the first proteins that appeared in evolution. Two forms of isoleucine-tRNA synthetase exist, a cytoplasmic form and a mitochondrial form. This gene encodes the mitochondrial isoleucine-tRNA synthetase which belongs to the class-I aminoacyl-tRNA synthetase family. [provided by RefSeq, Dec 2014],
matters needing attention	Avoid repeated freezing and thawing!

**Usage suggestions**

This product can be used in immunological reaction related experiments. For more information, please consult technical personnel.

Products Images

Western Blot analysis of various cells using IARS2 Monoclonal Antibody