



HSF-27 Monoclonal Antibody

Catalog No	YP-mAb-01818
Isotype	IgG
Reactivity	Human;Mouse;Rat
Applications	WB
Gene Name	CDK5RAP3
Protein Name	CDK5 regulatory subunit-associated protein 3
Immunogen	The antiserum was produced against synthesized peptide derived from human CDK5RAP3. AA range:341-390
Specificity	HSF-27 Monoclonal Antibody detects endogenous levels of HSF-27 protein.
Formulation	Liquid in PBS containing 50% glycerol, 0.5% BSA and 0.02% sodium azide.
Source	Monoclonal, Mouse,IgG
Purification	The antibody was affinity-purified from mouse antiserum by affinity-chromatography using epitope-specific immunogen.
Dilution	WB 1:500-1:2000
Concentration	1 mg/ml
Purity	≥90%
Storage Stability	-20°C/1 year
Synonyms	CDK5RAP3; IC53; MSTP016; OK/SW-cl.114; PP1553; CDK5 regulatory subunit-associated protein 3; CDK5 activator-binding protein C53; Protein HSF-27
Observed Band	60kD
Cell Pathway	Nucleus . Cytoplasm . Cytoplasm, cytoskeleton, microtubule organizing center, centrosome . Colocalizes and associates with microtubules. .
Tissue Specificity	Ubiquitously expressed (PubMed:12054757, PubMed:10721722). Expressed in heart, brain, placenta, lung, liver, skeletal muscle, kidney and pancreas. Isoform 3 is expressed in kidney, liver, skeletal muscle and placenta (PubMed:12737517).
Function	function:Potential regulator of CDK5 activity. May be involved in cell proliferation. Regulates CDK5 activity via its interaction with CDK5R1.,PTM:Phosphorylated in vitro by CDK5.,similarity:Belongs to the CDK5RAP3 family.,subunit:Interacts with CDK5R1. This interaction is prevented by the association between CDK5R1 and CDK5RAP3 (By similarity). Interacts with the enteric adenovirus serotype 41 fiber protein.,tissue specificity:Ubiquitous. Expressed in heart, brain, placenta, lung, liver, skeletal muscle, kidney and pancreas. Isoform 3 is expressed in kidney, liver, skeletal muscle and placenta.,
Background	This gene encodes a protein that has been reported to function in signaling pathways governing transcriptional regulation and cell cycle progression. It may play a role in tumorigenesis and metastasis. A pseudogene of this gene is located



on the long arm of chromosome 20. Alternative splicing results in multiple transcript variants that encode different isoforms. [provided by RefSeq, May 2013],

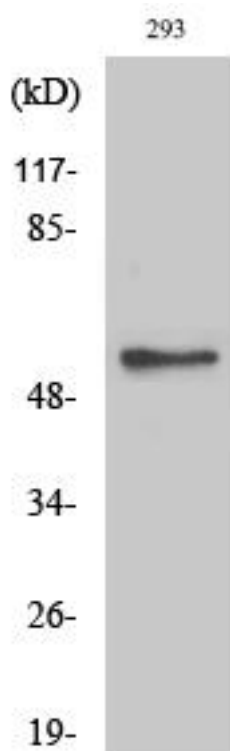
matters needing attention

Avoid repeated freezing and thawing!

Usage suggestions

This product can be used in immunological reaction related experiments. For more information, please consult technical personnel.

Products Images



Western Blot analysis of various cells using HSF-27 Monoclonal Antibody