



FXR2 Monoclonal Antibody

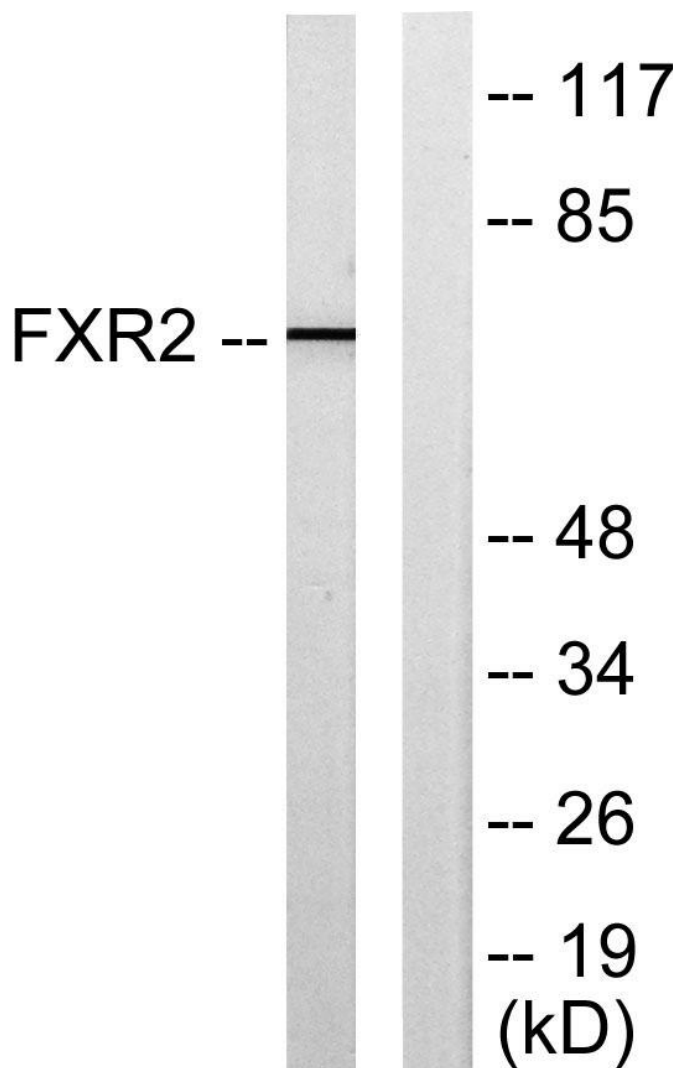
Catalog No	YP-mAb-01742
Isotype	IgG
Reactivity	Human;Mouse
Applications	WB
Gene Name	FXR2
Protein Name	Fragile X mental retardation syndrome-related protein 2
Immunogen	The antiserum was produced against synthesized peptide derived from human FXR2. AA range:551-600
Specificity	FXR2 Monoclonal Antibody detects endogenous levels of FXR2 protein.
Formulation	Liquid in PBS containing 50% glycerol, 0.5% BSA and 0.02% sodium azide.
Source	Monoclonal, Mouse,IgG
Purification	The antibody was affinity-purified from mouse antiserum by affinity-chromatography using epitope-specific immunogen.
Dilution	WB 1:500-1:2000
Concentration	1 mg/ml
Purity	≥90%
Storage Stability	-20°C/1 year
Synonyms	FXR2; FMR1L2; Fragile X mental retardation syndrome-related protein 2
Observed Band	74kD
Cell Pathway	Cytoplasm.
Tissue Specificity	Brain,Epithelium,Lymph,PNS,Skin,
Function	function:RNA-binding protein.,similarity:Belongs to the FMR1 family.,similarity:Contains 2 KH domains.,subunit:Interacts with FMR1 and FXR1. Interacts with CYFIP2 but not with CYFIP1. Interacts with TDRD3.,
Background	The protein encoded by this gene is a RNA binding protein containing two KH domains and one RCG box, which is similar to FMRP and FXR1. It associates with polyribosomes, predominantly with 60S large ribosomal subunits. This encoded protein may self-associate or interact with FMRP and FXR1. It may have a role in the development of fragile X mental retardation syndrome. [provided by RefSeq, Jul 2008],
matters needing attention	Avoid repeated freezing and thawing!



Usage suggestions

This product can be used in immunological reaction related experiments. For more information, please consult technical personnel.

Products Images



Western Blot analysis of various cells using FXR2 Monoclonal Antibody

-- 117

-- 85

-- 48

-- 34

-- 26

-- 19

(kD)