

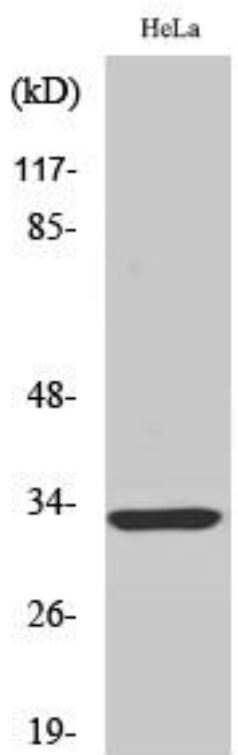


FoxR1 Monoclonal Antibody

Catalog No	YP-mAb-01740
Isotype	IgG
Reactivity	Human;Mouse
Applications	WB
Gene Name	FOXR1
Protein Name	Forkhead box protein R1
Immunogen	The antiserum was produced against synthesized peptide derived from human FOXR1. AA range:231-280
Specificity	FoxR1 Monoclonal Antibody detects endogenous levels of FoxR1 protein.
Formulation	Liquid in PBS containing 50% glycerol, 0.5% BSA and 0.02% sodium azide.
Source	Monoclonal, Mouse,IgG
Purification	The antibody was affinity-purified from mouse antiserum by affinity-chromatography using epitope-specific immunogen.
Dilution	WB 1:500-1:2000
Concentration	1 mg/ml
Purity	≥90%
Storage Stability	-20°C/1 year
Synonyms	FOXR1; FOXN5; DLNB13; Forkhead box protein R1; Forkhead box protein N5
Observed Band	35kD
Cell Pathway	Cytoplasm . Cytoplasm, perinuclear region . Located in the cytoplasm of spermatocytes and strongly accumulates at the perinuclear region in elongated spermatids. .
Tissue Specificity	Expressed in testis (at protein level).
Function	similarity:Contains 1 fork-head DNA-binding domain.,
Background	This gene encodes a member of the forkhead box (FOX) family of transcription factors. FOX family members are monomeric, helix-turn-helix proteins with a core DNA-binding domain of approximately 110 aa. Many FOX transcription factors play roles in determining cell fates during early development. This forkhead box protein lacks the C-terminal basic region found in many other FOX family members. It is located within the 11q23.3 region which is commonly deleted in neuroblastomas. [provided by RefSeq, Jul 2008],
matters needing attention	Avoid repeated freezing and thawing!

**Usage suggestions**

This product can be used in immunological reaction related experiments. For more information, please consult technical personnel.

Products Images

Western Blot analysis of various cells using FoxR1 Monoclonal Antibody