

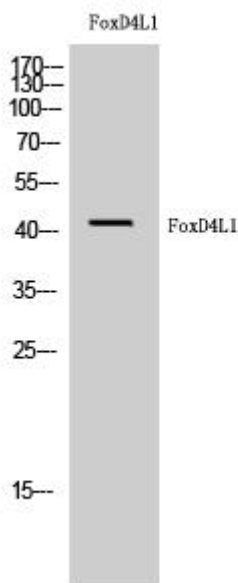


FoxD4L1 Monoclonal Antibody

Catalog No	YP-mAb-01723
Isotype	IgG
Reactivity	Human;Rat;Mouse;
Applications	WB
Gene Name	FOXD4L1
Protein Name	Forkhead box protein D4-like 1
Immunogen	Synthesized peptide derived from FoxD4L1 . at AA range: 320-400
Specificity	FoxD4L1 Monoclonal Antibody detects endogenous levels of FoxD4L1 protein.
Formulation	Liquid in PBS containing 50% glycerol, 0.5% BSA and 0.02% sodium azide.
Source	Monoclonal, Mouse,IgG
Purification	The antibody was affinity-purified from mouse antiserum by affinity-chromatography using epitope-specific immunogen.
Dilution	WB 1:500-1:2000
Concentration	1 mg/ml
Purity	≥90%
Storage Stability	-20°C/1 year
Synonyms	FOXD4L1; Forkhead box protein D4-like 1; FOXD4-like 1
Observed Band	45kD
Cell Pathway	Nucleus .
Tissue Specificity	Brain,Heart,Thymus,
Function	similarity:Contains 1 fork-head DNA-binding domain.,
Background	forkhead box D4-like 1(FOXD4L1) Homo sapiens This gene is a member of the forkhead/winged-helix (FOX) family of transcription factors with highly conserved FOX DNA-binding domains. Members of the FOX family of transcription factors are regulators of embryogenesis and may play a role in human cancer. This gene lies in a region of chromosome 2 that surrounds the site where two ancestral chromosomes fused to form human chromosome 2. This region is duplicated elsewhere in the human genome, primarily in subtelomeric and pericentromeric locations, thus mutiple copies of this gene have been found. [provided by RefSeq, Jul 2008],
matters needing attention	Avoid repeated freezing and thawing!

**Usage suggestions**

This product can be used in immunological reaction related experiments. For more information, please consult technical personnel.

Products Images

Western Blot analysis of various cells using FoxD4L1 Monoclonal Antibody