

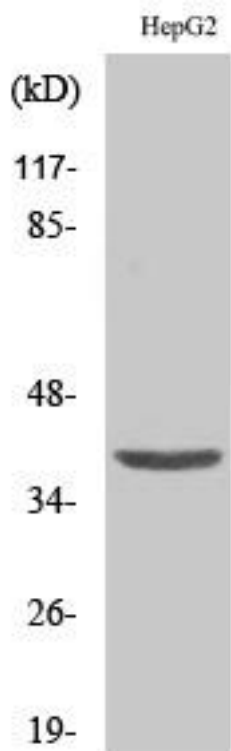


Fliz1 Monoclonal Antibody

| | |
|----------------------------------|---|
| Catalog No | YP-mAb-01714 |
| Isotype | IgG |
| Reactivity | Human;Rat;Mouse; |
| Applications | WB |
| Gene Name | ZC3H8 |
| Protein Name | Zinc finger CCCH domain-containing protein 8 |
| Immunogen | The antiserum was produced against synthesized peptide derived from human ZC3H8. AA range:81-130 |
| Specificity | Fliz1 Monoclonal Antibody detects endogenous levels of Fliz1 protein. |
| Formulation | Liquid in PBS containing 50% glycerol, 0.5% BSA and 0.02% sodium azide. |
| Source | Monoclonal, Mouse,IgG |
| Purification | The antibody was affinity-purified from mouse antiserum by affinity-chromatography using epitope-specific immunogen. |
| Dilution | WB 1:500-1:2000 |
| Concentration | 1 mg/ml |
| Purity | ≥90% |
| Storage Stability | -20°C/1 year |
| Synonyms | ZC3H8; ZC3HDC8; Zinc finger CCCH domain-containing protein 8 |
| Observed Band | 40kD |
| Cell Pathway | Nucleus . Colocalizes with coilin in subnuclear cajal and histone locus bodies. Translocates in the LEC complex to cajal and histone locus bodies at snRNA genes in a ICE1-dependent manner. Associates to transcriptionally active chromatin at snRNA genes. |
| Tissue Specificity | Skin, |
| Function | PTM:Phosphorylated upon DNA damage, probably by ATM or ATR.,similarity:Contains 3 C3H1-type zinc fingers., |
| Background | PTM:Phosphorylated upon DNA damage, probably by ATM or ATR.,similarity:Contains 3 C3H1-type zinc fingers., |
| matters needing attention | Avoid repeated freezing and thawing! |
| Usage suggestions | This product can be used in immunological reaction related experiments. For more information, please consult technical personnel. |



Products Images



Western Blot analysis of various cells using Fliz1
Monoclonal Antibody