



# FEV Monoclonal Antibody

<b>Catalog No</b>	YP-mAb-01710
<b>Isotype</b>	IgG
<b>Reactivity</b>	Human;Rat;Mouse;
<b>Applications</b>	WB
<b>Gene Name</b>	FEV
<b>Protein Name</b>	Protein FEV
<b>Immunogen</b>	Synthesized peptide derived from the N-terminal region of human FEV.
<b>Specificity</b>	FEV Monoclonal Antibody detects endogenous levels of FEV protein.
<b>Formulation</b>	Liquid in PBS containing 50% glycerol, 0.5% BSA and 0.02% sodium azide.
<b>Source</b>	Monoclonal, Mouse,IgG
<b>Purification</b>	The antibody was affinity-purified from mouse antiserum by affinity-chromatography using epitope-specific immunogen.
<b>Dilution</b>	WB 1:500-1:2000
<b>Concentration</b>	1 mg/ml
<b>Purity</b>	≥90%
<b>Storage Stability</b>	-20°C/1 year
<b>Synonyms</b>	FEV; PET1; Protein FEV; Fifth Ewing variant protein; PC12 ETS domain-containing transcription factor 1; PC12 ETS factor 1; Pet-1
<b>Observed Band</b>	25kD
<b>Cell Pathway</b>	Nucleus .
<b>Tissue Specificity</b>	In brain, exclusively expressed in the major serotonergic neurons of the dorsal and median raphe nuclei located in the midbrain and pons. Also detected in prostate and small intestine.
<b>Function</b>	disease:A chromosomal translocation involving FEV is found in Ewing tumors. Translocation t(2;21;22)(q23;q22;q12) that forms a EWSR1-FEV fusion protein with a potential oncogenic activity.,disease:Genetic variation in FEV may be associated with susceptibility to sudden infant death syndrome (SIDS) [MIM:272120]. SIDS remains elusive in its causes and devastating in its consequences. Despite the impressive decline in the incidence of SIDS since the recommendation to avoid the prone sleep position, SIDS remains a leading cause of death in the first year of life.,function:Functions as a transcriptional regulator. According to PubMed:1761502 it functions as a transcriptional repressor. Functions in the differentiation and the maintenance of the central serotonergic neurons. May play a role in cell growth.,similarity:Belongs to the ETS family.,similarity:Contains 1 ETS DNA-binding domain.,tiss



## Background

This gene belongs to the ETS transcription factor family. ETS family members have a highly conserved 85-amino acid ETS domain that binds purine-rich DNA sequences. The alanine-rich C-terminus of this gene indicates that it may act as a transcription repressor. This gene is exclusively expressed in neurons of the central serotonin (5-HT) system, a system implicated in the pathogeny of such psychiatric diseases as depression, anxiety, and eating disorders. In some types of Ewing tumors, this gene is fused to the Ewing sarcoma (EWS) gene following chromosome translocations. [provided by RefSeq, Jul 2008],

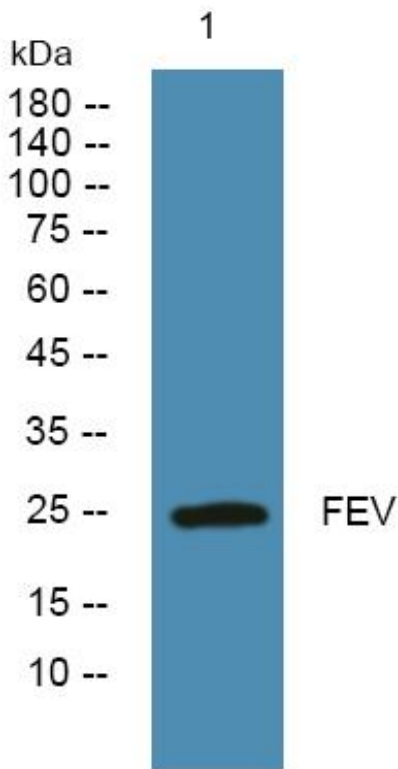
## matters needing attention

Avoid repeated freezing and thawing!

## Usage suggestions

This product can be used in immunological reaction related experiments. For more information, please consult technical personnel.

## Products Images



Western Blot analysis of various cells using FEV Monoclonal Antibody