

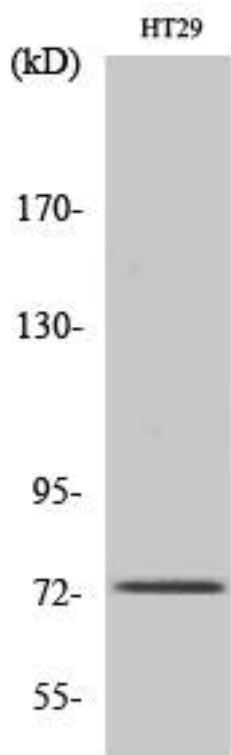


EOMES Monoclonal Antibody

Catalog No	YP-mAb-01696
Isotype	IgG
Reactivity	Human;Mouse
Applications	WB
Gene Name	EOMES
Protein Name	Eomesodermin homolog
Immunogen	The antiserum was produced against synthesized peptide derived from human EOMES. AA range:59-108
Specificity	EOMES Monoclonal Antibody detects endogenous levels of EOMES protein.
Formulation	Liquid in PBS containing 50% glycerol, 0.5% BSA and 0.02% sodium azide.
Source	Monoclonal, Mouse,IgG
Purification	The antibody was affinity-purified from mouse antiserum by affinity-chromatography using epitope-specific immunogen.
Dilution	WB 1:500-1:2000
Concentration	1 mg/ml
Purity	≥90%
Storage Stability	-20°C/1 year
Synonyms	EOMES; TBR2; Eomesodermin homolog; T-box brain protein 2; T-brain-2; TBR-2
Observed Band	73kD
Cell Pathway	Nucleus .
Tissue Specificity	Expressed in CD8+ T-cells.
Function	similarity:Contains 1 T-box DNA-binding domain.,
Background	This gene belongs to the TBR1 (T-box brain protein 1) sub-family of T-box genes that share the common DNA-binding T-box domain. The encoded protein is a transcription factor which is crucial for embryonic development of mesoderm and the central nervous system in vertebrates. The protein may also be necessary for the differentiation of effector CD8+ T cells which are involved in defense against viral infections. A similar gene disrupted in mice is shown to be essential during trophoblast development and gastrulation. Alternative splicing results in multiple transcript variants. [provided by RefSeq, May 2013],
matters needing attention	Avoid repeated freezing and thawing!

**Usage suggestions**

This product can be used in immunological reaction related experiments. For more information, please consult technical personnel.

Products Images

Western Blot analysis of various cells using EOMES Monoclonal Antibody