



DDX52 Monoclonal Antibody

Catalog No	YP-mAb-01645
Isotype	IgG
Reactivity	Human;Rat;Mouse;
Applications	WB
Gene Name	DDX52
Protein Name	Probable ATP-dependent RNA helicase DDX52
Immunogen	The antiserum was produced against synthesized peptide derived from human DDX52. AA range:550-599
Specificity	DDX52 Monoclonal Antibody detects endogenous levels of DDX52 protein.
Formulation	Liquid in PBS containing 50% glycerol, 0.5% BSA and 0.02% sodium azide.
Source	Monoclonal, Mouse,IgG
Purification	The antibody was affinity-purified from mouse antiserum by affinity-chromatography using epitope-specific immunogen.
Dilution	WB 1:500-1:2000
Concentration	1 mg/ml
Purity	≥90%
Storage Stability	-20°C/1 year
Synonyms	DDX52; ROK1; HUSSY-19; Probable ATP-dependent RNA helicase DDX52; ATP-dependent RNA helicase ROK1-like; DEAD box protein 52
Observed Band	67kD
Cell Pathway	Nucleus, nucleolus .
Tissue Specificity	Brain,Liver,Prostate,Spleen,Teratocarcinoma,Thymus,
Function	caution:The sequence shown here is derived from an Ensembl automatic analysis pipeline and should be considered as preliminary data.,PTM:Phosphorylated upon DNA damage, probably by ATM or ATR.,sequence caution:Several sequencing problems.,similarity:Belongs to the DEAD box helicase family. DDX52/ROK1 subfamily.,similarity:Contains 1 helicase ATP-binding domain.,similarity:Contains 1 helicase C-terminal domain.,
Background	caution:The sequence shown here is derived from an Ensembl automatic analysis pipeline and should be considered as preliminary data.,PTM:Phosphorylated upon DNA damage, probably by ATM or ATR.,sequence caution:Several sequencing problems.,similarity:Belongs to the DEAD box helicase family. DDX52/ROK1 subfamily.,similarity:Contains 1 helicase ATP-binding domain.,similarity:Contains 1 helicase C-terminal domain.,



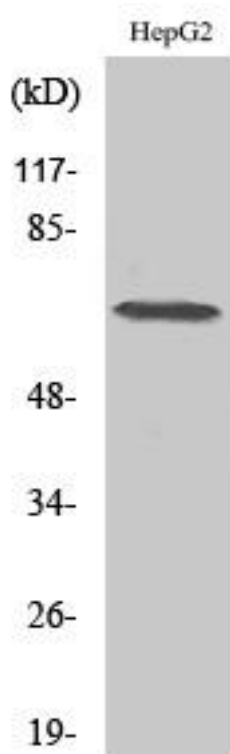
matters needing attention

Avoid repeated freezing and thawing!

Usage suggestions

This product can be used in immunological reaction related experiments. For more information, please consult technical personnel.

Products Images



Western Blot analysis of various cells using DDX52 Monoclonal Antibody