



DDX19B Monoclonal Antibody

Catalog No	YP-mAb-01639
Isotype	IgG
Reactivity	Human;Mouse
Applications	WB
Gene Name	DDX19B
Protein Name	ATP-dependent RNA helicase DDX19B
Immunogen	The antiserum was produced against synthesized peptide derived from human DDX19B. AA range:1-50
Specificity	DDX19B Monoclonal Antibody detects endogenous levels of DDX19B protein.
Formulation	Liquid in PBS containing 50% glycerol, 0.5% BSA and 0.02% sodium azide.
Source	Monoclonal, Mouse,IgG
Purification	The antibody was affinity-purified from mouse antiserum by affinity-chromatography using epitope-specific immunogen.
Dilution	WB 1:500-1:2000
Concentration	1 mg/ml
Purity	≥90%
Storage Stability	-20°C/1 year
Synonyms	DDX19B; DBP5; DDX19; TDBP; ATP-dependent RNA helicase DDX19B; DEAD box RNA helicase DEAD5; DEAD box protein 19B
Observed Band	50kD
Cell Pathway	Cytoplasm . Nucleus, nucleoplasm . Associates with the nuclear pore complex cytoplasmic fibrils. .
Tissue Specificity	Brain,Liver,Ovary,Skin,Stomach,Testis,
Function	function:ATP-dependent RNA helicase involved in mRNA export from the nucleus.,similarity:Belongs to the DEAD box helicase family. DDX19/DBP5 subfamily.,similarity:Contains 1 helicase ATP-binding domain.,similarity:Contains 1 helicase C-terminal domain.,subcellular location:Nuclear pore complex cytoplasmic fibrils.,subunit:Interacts with NUP214.,
Background	DEAD box proteins, characterized by the conserved motif Asp-Glu-Ala-Asp (DEAD), are putative RNA helicases. They are implicated in a number of cellular processes involving alteration of RNA secondary structure such as translation initiation, nuclear and mitochondrial splicing, and ribosome and spliceosome assembly. Based on their distribution patterns, some members of this family are believed to be involved in embryogenesis, spermatogenesis, and cellular growth and division. This gene encodes a DEAD box protein, which exhibits RNA-dependent ATPase and ATP-dependent RNA-unwinding activities. This



protein is recruited to the cytoplasmic fibrils of the nuclear pore complex, where it participates in the export of mRNA from the nucleus. Multiple alternatively spliced transcript variants encoding different isoforms have been found for this gene. [provided by RefSeq, Jul 2008],

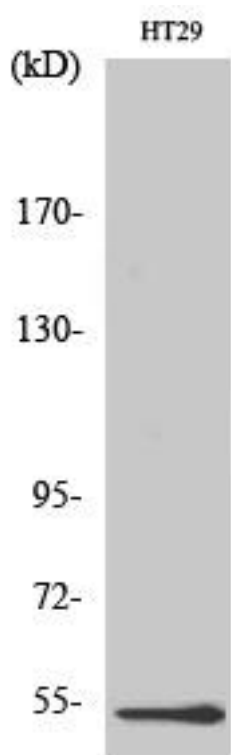
matters needing attention

Avoid repeated freezing and thawing!

Usage suggestions

This product can be used in immunological reaction related experiments. For more information, please consult technical personnel.

Products Images



Western Blot analysis of various cells using DDX19B Monoclonal Antibody