



# CstF-50 Monoclonal Antibody

<b>Catalog No</b>	YP-mAb-01630
<b>Isotype</b>	IgG
<b>Reactivity</b>	Human;Mouse;Rat
<b>Applications</b>	WB
<b>Gene Name</b>	CSTF1
<b>Protein Name</b>	Cleavage stimulation factor subunit 1
<b>Immunogen</b>	The antiserum was produced against synthesized peptide derived from human CSTF1. AA range:1-50
<b>Specificity</b>	CstF-50 Monoclonal Antibody detects endogenous levels of CstF-50 protein.
<b>Formulation</b>	Liquid in PBS containing 50% glycerol, 0.5% BSA and 0.02% sodium azide.
<b>Source</b>	Monoclonal, Mouse,IgG
<b>Purification</b>	The antibody was affinity-purified from mouse antiserum by affinity-chromatography using epitope-specific immunogen.
<b>Dilution</b>	WB 1:500-1:2000
<b>Concentration</b>	1 mg/ml
<b>Purity</b>	≥90%
<b>Storage Stability</b>	-20°C/1 year
<b>Synonyms</b>	CSTF1; Cleavage stimulation factor subunit 1; CF-1 50 kDa subunit; Cleavage stimulation factor 50 kDa subunit; CSTF 50 kDa subunit; CstF-50
<b>Observed Band</b>	48kD
<b>Cell Pathway</b>	Nucleus .
<b>Tissue Specificity</b>	Muscle,Testis,
<b>Function</b>	domain:N-terminus mediates homodimerization.,domain:The WD6 domain is required for interaction with BARD1. WD domains are responsible for interaction with CSTF3.,function:One of the multiple factors required for polyadenylation and 3'-end cleavage of mammalian pre-mRNAs. May be responsible for the interaction of CSTF with other factors to form a stable complex on the pre-mRNA.,PTM:The N-terminus is blocked.,similarity:Contains 6 WD repeats.,subunit:Homodimer. The CSTF complex is composed of CSTF1 (50 kDa subunit), CSTF2 (64 kDa subunit) and CSTF3 (77 kDa subunit). Interacts directly with CSTF3. Interacts with BARD1.,
<b>Background</b>	This gene encodes one of three subunits which combine to form cleavage stimulation factor (CSTF). CSTF is involved in the polyadenylation and 3'-end cleavage of pre-mRNAs. Similar to mammalian G protein beta subunits, this protein contains transducin-like repeats. Several transcript variants with different 5' UTR, but encoding the same protein, have been found for



this gene. [provided by RefSeq, Jul 2008],

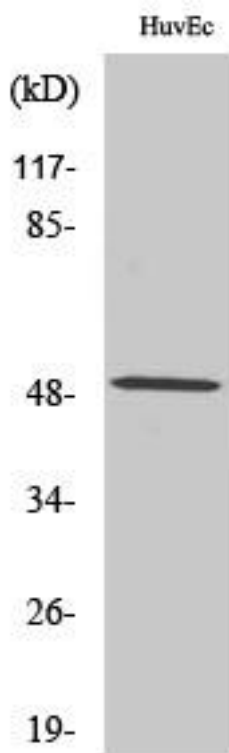
**matters needing attention**

Avoid repeated freezing and thawing!

**Usage suggestions**

This product can be used in immunological reaction related experiments. For more information, please consult technical personnel.

**Products Images**



Western Blot analysis of various cells using CstF-50 Monoclonal Antibody