



# CRP1 Monoclonal Antibody

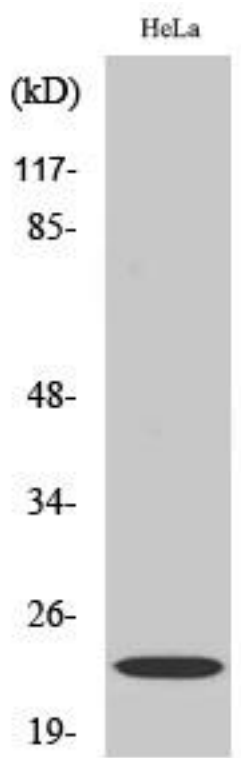
<b>Catalog No</b>	YP-mAb-01623
<b>Isotype</b>	IgG
<b>Reactivity</b>	Human;Mouse;Rat
<b>Applications</b>	WB
<b>Gene Name</b>	CSRP1
<b>Protein Name</b>	Cysteine and glycine-rich protein 1
<b>Immunogen</b>	The antiserum was produced against synthesized peptide derived from human CRP1. AA range:51-100
<b>Specificity</b>	CRP1 Monoclonal Antibody detects endogenous levels of CRP1 protein.
<b>Formulation</b>	Liquid in PBS containing 50% glycerol, 0.5% BSA and 0.02% sodium azide.
<b>Source</b>	Monoclonal, Mouse,IgG
<b>Purification</b>	The antibody was affinity-purified from mouse antiserum by affinity-chromatography using epitope-specific immunogen.
<b>Dilution</b>	WB 1:500-1:2000
<b>Concentration</b>	1 mg/ml
<b>Purity</b>	≥90%
<b>Storage Stability</b>	-20°C/1 year
<b>Synonyms</b>	CSRP1; CSRP; CYRP; Cysteine and glycine-rich protein 1; Cysteine-rich protein 1; CRP; CRP1
<b>Observed Band</b>	22kD
<b>Cell Pathway</b>	Nucleus .
<b>Tissue Specificity</b>	Amygdala,Brain,Cervix,Epithelium,Pancreas,Term placenta,Trachea,Ute
<b>Function</b>	function:Could play a role in neuronal development.,similarity:Contains 1 LIM zinc-binding domain.,similarity:Contains 2 LIM zinc-binding domains.,subunit:Monomer.,
<b>Background</b>	This gene encodes a member of the cysteine-rich protein (CSRP) family. This gene family includes a group of LIM domain proteins, which may be involved in regulatory processes important for development and cellular differentiation. The LIM/double zinc-finger motif found in this gene product occurs in proteins with critical functions in gene regulation, cell growth, and somatic differentiation. Alternatively spliced transcript variants have been described. [provided by RefSeq, Aug 2010],
<b>matters needing attention</b>	Avoid repeated freezing and thawing!



### Usage suggestions

This product can be used in immunological reaction related experiments. For more information, please consult technical personnel.

### Products Images



Western Blot analysis of various cells using CRP1 Monoclonal Antibody