

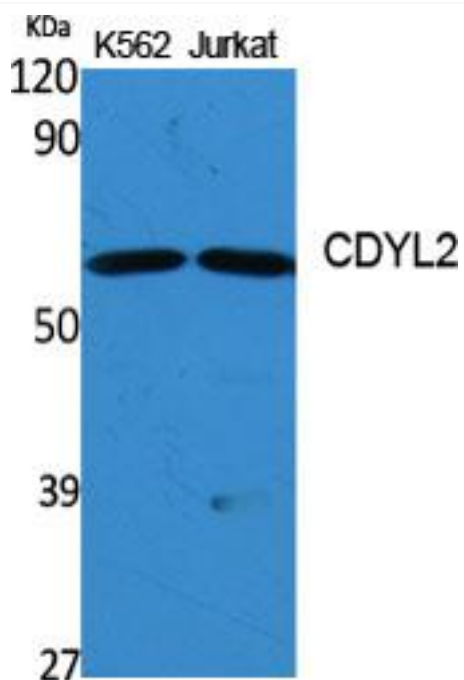


CDYL2 Monoclonal Antibody

Catalog No	YP-mAb-01604
Isotype	IgG
Reactivity	Human;Rat;Mouse;
Applications	WB
Gene Name	CDYL2
Protein Name	Chromodomain Y-like protein 2
Immunogen	The antiserum was produced against synthesized peptide derived from human CDYL2. AA range:31-80
Specificity	CDYL2 Monoclonal Antibody detects endogenous levels of CDYL2 protein.
Formulation	Liquid in PBS containing 50% glycerol, 0.5% BSA and 0.02% sodium azide.
Source	Monoclonal, Mouse,IgG
Purification	The antibody was affinity-purified from mouse antiserum by affinity-chromatography using epitope-specific immunogen.
Dilution	WB 1:500-1:2000
Concentration	1 mg/ml
Purity	≥90%
Storage Stability	-20°C/1 year
Synonyms	CDYL2; Chromodomain Y-like protein 2; CDY-like 2
Observed Band	56kD
Cell Pathway	Nucleus .
Tissue Specificity	Ubiquitously expressed.
Function	similarity:Contains 1 chromo domain.,tissue specificity:Ubiquitously expressed.,
Background	similarity:Contains 1 chromo domain.,tissue specificity:Ubiquitously expressed.,
matters needing attention	Avoid repeated freezing and thawing!
Usage suggestions	This product can be used in immunological reaction related experiments. For more information, please consult technical personnel.



Products Images



Western Blot analysis of various cells using CDYL2 Monoclonal Antibody