



# CBP80 Monoclonal Antibody

<b>Catalog No</b>	YP-mAb-01591
<b>Isotype</b>	IgG
<b>Reactivity</b>	Human;Mouse;Rat
<b>Applications</b>	WB
<b>Gene Name</b>	NCBP1
<b>Protein Name</b>	Nuclear cap-binding protein subunit 1
<b>Immunogen</b>	The antiserum was produced against synthesized peptide derived from human NCBP1. AA range:1-50
<b>Specificity</b>	CBP80 Monoclonal Antibody detects endogenous levels of CBP80 protein.
<b>Formulation</b>	Liquid in PBS containing 50% glycerol, 0.5% BSA and 0.02% sodium azide.
<b>Source</b>	Monoclonal, Mouse,IgG
<b>Purification</b>	The antibody was affinity-purified from mouse antiserum by affinity-chromatography using epitope-specific immunogen.
<b>Dilution</b>	WB 1:500-1:2000
<b>Concentration</b>	1 mg/ml
<b>Purity</b>	≥90%
<b>Storage Stability</b>	-20°C/1 year
<b>Synonyms</b>	NCBP1; CBP80; NCBP; Nuclear cap-binding protein subunit 1; 80 kDa nuclear cap-binding protein; CBP80; NCBP 80 kDa subunit
<b>Observed Band</b>	80kD
<b>Cell Pathway</b>	Nucleus . Cytoplasm . Localized in cytoplasmic mRNP granules containing untranslated mRNAs. .
<b>Tissue Specificity</b>	Brain,Epithelium,Placenta,
<b>Function</b>	function:Involved in mediating U snRNA export from the nucleus. Binds to 5' capped mRNA.,similarity:Belongs to the NCBP1 family.,similarity:Contains 1 MIF4G domain.,subunit:Found in a U snRNA export complex with RNUXA/PHAX, CBP20, CBP80, RAN, XPO1 and m7G-capped RNA. Interaction with RNUXA/PHAX (By similarity). Heterodimer with NCBP2. Is part of the exon junction complex (EJC) containing NCBP1, NCBP2, RNPS1, RBM8A, SRRM1, NXF1, UPF3B, UPF2, THOC4 and/or REFBP2.,
<b>Background</b>	The product of this gene is a component of the nuclear cap-binding protein complex (CBC), which binds to the monomethylated 5' cap of nascent pre-mRNA in the nucleoplasm. The encoded protein promotes high-affinity mRNA-cap binding and associates with the CTD of RNA polymerase II. The CBC promotes pre-mRNA splicing, 3' end processing, RNA nuclear export, and nonsense-mediated mRNA decay. [provided by RefSeq, Jul 2008],



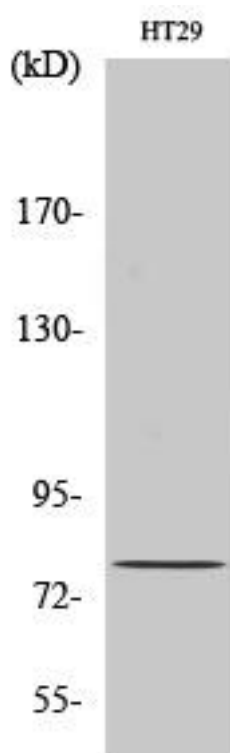
**matters needing attention**

Avoid repeated freezing and thawing!

**Usage suggestions**

This product can be used in immunological reaction related experiments. For more information, please consult technical personnel.

**Products Images**



Western Blot analysis of various cells using CBP80 Monoclonal Antibody