



CARP Monoclonal Antibody

| | |
|---------------------------|--|
| Catalog No | YP-mAb-01588 |
| Isotype | IgG |
| Reactivity | Human;Mouse;Rat |
| Applications | WB |
| Gene Name | ANKRD1 |
| Protein Name | Ankyrin repeat domain-containing protein 1 |
| Immunogen | The antiserum was produced against synthesized peptide derived from human ANKRD1. AA range:231-280 |
| Specificity | CARP Monoclonal Antibody detects endogenous levels of CARP protein. |
| Formulation | Liquid in PBS containing 50% glycerol, 0.5% BSA and 0.02% sodium azide. |
| Source | Monoclonal, Mouse,IgG |
| Purification | The antibody was affinity-purified from mouse antiserum by affinity-chromatography using epitope-specific immunogen. |
| Dilution | WB 1:500-1:2000 |
| Concentration | 1 mg/ml |
| Purity | ≥90% |
| Storage Stability | -20°C/1 year |
| Synonyms | ANKRD1; C193; CARP; HA1A2; Ankyrin repeat domain-containing protein 1; Cardiac ankyrin repeat protein; Cytokine-inducible gene C-193 protein; Cytokine-inducible nuclear protein |
| Observed Band | 36kD |
| Cell Pathway | Nucleus . |
| Tissue Specificity | Mainly expressed in activated vascular endothelial cells. To a lower extent, also expressed in hepatoma cells. |
| Function | disease:Defects in ANKRD1 may be a cause of total anomalous pulmonary venous return (TAPVR) [MIM:106700]. TAPVR is a rare congenital heart disease (CHD) in which the pulmonary veins fail to connect to the left atrium during cardiac development, draining instead into either the right atrium or one of its venous tributaries. This disease accounts for 1.5% of all CHDs and has a prevalence of approximately 1 out of 15'000 live births.,function:May play an important role in endothelial cell activation. May act as a nuclear transcription factor that negatively regulates the expression of cardiac genes. Induction seems to be correlated with apoptotic cell death in hepatoma cells.,induction:By TNF, IL1A and parthenolide.,miscellaneous:A chromosomal aberration in the region of ANKRD1 may be a cause of total anomalous pulmonary venous return (TAPVR) [MIM:106700]. Translocation t(10;21)(q23.31;q11. |



Background

ankyrin repeat domain 1(ANKRD1) Homo sapiens The protein encoded by this gene is localized to the nucleus of endothelial cells and is induced by IL-1 and TNF-alpha stimulation. Studies in rat cardiomyocytes suggest that this gene functions as a transcription factor. Interactions between this protein and the sarcomeric proteins myopalladin and titin suggest that it may also be involved in the myofibrillar stretch-sensor system. [provided by RefSeq, Jul 2008],

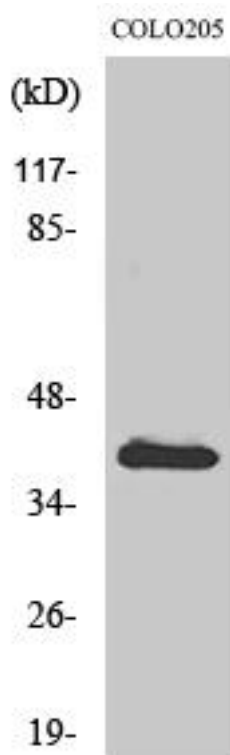
matters needing attention

Avoid repeated freezing and thawing!

Usage suggestions

This product can be used in immunological reaction related experiments. For more information, please consult technical personnel.

Products Images



Western Blot analysis of various cells using CARP Monoclonal Antibody