



## C/EBP $\gamma$ Monoclonal Antibody

Catalog No	YP-mAb-01581
Isotype	IgG
Reactivity	Human;Mouse;Rat
Applications	WB
Gene Name	CEBPG
Protein Name	CCAAT/enhancer-binding protein gamma
Immunogen	The antiserum was produced against synthesized peptide derived from human CEBPG. AA range:31-80
Specificity	C/EBP $\gamma$ Monoclonal Antibody detects endogenous levels of C/EBP $\gamma$ protein.
Formulation	Liquid in PBS containing 50% glycerol, 0.5% BSA and 0.02% sodium azide.
Source	Monoclonal, Mouse,IgG
Purification	The antibody was affinity-purified from mouse antiserum by affinity-chromatography using epitope-specific immunogen.
Dilution	WB 1:500-1:2000
Concentration	1 mg/ml
Purity	$\geq 90\%$
Storage Stability	-20°C/1 year
Synonyms	CEBPG; CCAAT/enhancer-binding protein gamma; C/EBP gamma
Observed Band	22kD
Cell Pathway	Nucleus .
Tissue Specificity	Placenta,T-cell,Trachea,
Function	function:Transcription factor that binds to the enhancer element PRE-I (positive regulatory element-I) of the IL-4 gene. Might change the DNA-binding specificity of other transcription factors and recruit them to unusual DNA sites.,similarity:Belongs to the bZIP family. C/EBP subfamily.,similarity:Contains 1 bZIP domain.,subunit:Binds DNA as a dimer and can form stable heterodimers with C/EBP alpha and beta and with Fos protein.,
Background	The C/EBP family of transcription factors regulates viral and cellular CCAAT/enhancer element-mediated transcription. C/EBP proteins contain the bZIP region, which is characterized by two motifs in the C-terminal half of the protein: a basic region involved in DNA binding and a leucine zipper motif involved in dimerization. The C/EBP family consist of several related proteins, C/EBP alpha, C/EBP beta, C/EBP gamma, and C/EBP delta, that form homodimers and that form heterodimers with each other. CCAAT/enhancer binding protein gamma may cooperate with Fos to bind PRE-I enhancer elements. Two transcript variants



encoding the same protein have been found for this gene. [provided by RefSeq, Nov 2011],

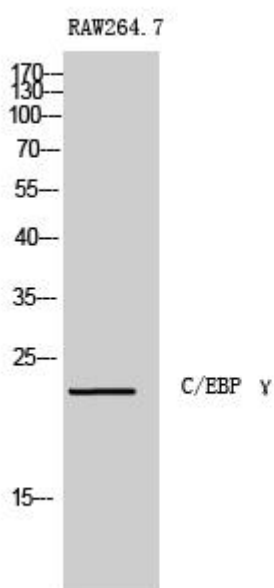
**matters needing attention**

Avoid repeated freezing and thawing!

**Usage suggestions**

This product can be used in immunological reaction related experiments. For more information, please consult technical personnel.

## Products Images



Western Blot analysis of various cells using C/EBP  $\gamma$  Monoclonal Antibody