

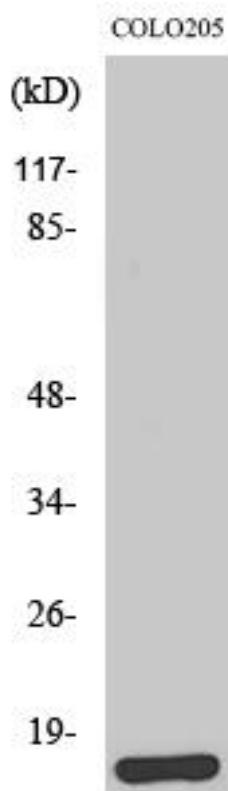


Brp44L Monoclonal Antibody

Catalog No	YP-mAb-01574
Isotype	IgG
Reactivity	Human;Mouse;Rat
Applications	WB
Gene Name	MPC1
Protein Name	Mitochondrial pyruvate carrier 1
Immunogen	The antiserum was produced against synthesized peptide derived from human BRP44L. AA range:11-60
Specificity	Brp44L Monoclonal Antibody detects endogenous levels of Brp44L protein.
Formulation	Liquid in PBS containing 50% glycerol, 0.5% BSA and 0.02% sodium azide.
Source	Monoclonal, Mouse,IgG
Purification	The antibody was affinity-purified from mouse antiserum by affinity-chromatography using epitope-specific immunogen.
Dilution	WB 1:500-1:2000
Concentration	1 mg/ml
Purity	≥90%
Storage Stability	-20°C/1 year
Synonyms	MPC1; BRP44L; CGI-129; HSPC040; PNAS-115; Mitochondrial pyruvate carrier 1; Brain protein 44-like protein
Observed Band	12kD
Cell Pathway	Mitochondrion inner membrane ; Multi-pass membrane protein .
Tissue Specificity	Placenta,Promyelocytic leukemia,Skeletal muscle,Umbilical cord blood,
Function	similarity:Belongs to the UPF0041 (0-44) family.,
Background	The protein encoded by this gene is part of an MPC1/MPC2 heterodimer that is responsible for transporting pyruvate into mitochondria. The encoded protein is found in the inner mitochondrial membrane. Defects in this gene are a cause of mitochondrial pyruvate carrier deficiency. Several transcript variants, some protein coding and one non-protein coding, have been found for this gene. [provided by RefSeq, Aug 2012],
matters needing attention	Avoid repeated freezing and thawing!

**Usage suggestions**

This product can be used in immunological reaction related experiments. For more information, please consult technical personnel.

Products Images

Western Blot analysis of various cells using Brp44L Monoclonal Antibody