

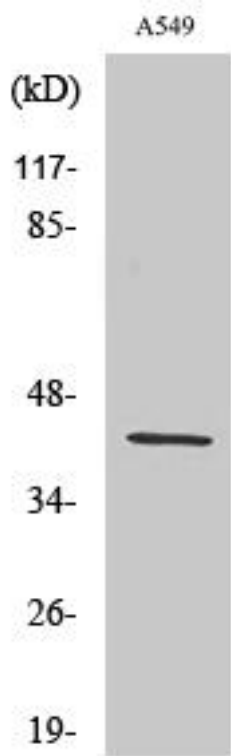


# AARSD1 Monoclonal Antibody

<b>Catalog No</b>	YP-mAb-01517
<b>Isotype</b>	IgG
<b>Reactivity</b>	Human;Mouse;Rat
<b>Applications</b>	WB
<b>Gene Name</b>	AARSD1
<b>Protein Name</b>	Alanyl-tRNA editing protein Aarsd1
<b>Immunogen</b>	The antiserum was produced against synthesized peptide derived from human AARSD1. AA range:141-190
<b>Specificity</b>	AARSD1 Monoclonal Antibody detects endogenous levels of AARSD1 protein.
<b>Formulation</b>	Liquid in PBS containing 50% glycerol, 0.5% BSA and 0.02% sodium azide.
<b>Source</b>	Monoclonal, Mouse,IgG
<b>Purification</b>	The antibody was affinity-purified from mouse antiserum by affinity-chromatography using epitope-specific immunogen.
<b>Dilution</b>	WB 1:500-1:2000
<b>Concentration</b>	1 mg/ml
<b>Purity</b>	≥90%
<b>Storage Stability</b>	-20°C/1 year
<b>Synonyms</b>	AARSD1; Alanyl-tRNA editing protein Aarsd1; Alanyl-tRNA synthetase domain-containing protein 1
<b>Observed Band</b>	45kD
<b>Cell Pathway</b>	Cytoplasm .
<b>Tissue Specificity</b>	Hippocampus,Lung,Neuroblastoma,
<b>Function</b>	caution:The sequence shown here is derived from an Ensembl automatic analysis pipeline and should be considered as preliminary data.,similarity:Belongs to the class-II aminoacyl-tRNA synthetase family. AARSD1 subfamily.,
<b>Background</b>	caution:The sequence shown here is derived from an Ensembl automatic analysis pipeline and should be considered as preliminary data.,similarity:Belongs to the class-II aminoacyl-tRNA synthetase family. AARSD1 subfamily.,
<b>matters needing attention</b>	Avoid repeated freezing and thawing!
<b>Usage suggestions</b>	This product can be used in immunological reaction related experiments. For more information, please consult technical personnel.



## Products Images



Western Blot analysis of various cells using AARSD1 Monoclonal Antibody