

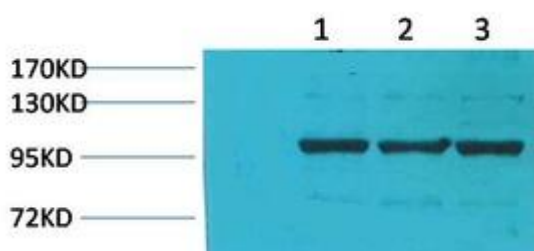


# IGFN1 Monoclonal Antibody

<b>Catalog No</b>	YP-mAb-01204
<b>Isotype</b>	IgG
<b>Reactivity</b>	Human;Mouse;Rat
<b>Applications</b>	WB
<b>Gene Name</b>	IGFN1
<b>Protein Name</b>	Immunoglobulin-like and fibronectin type III domain-containing protein 1
<b>Immunogen</b>	Recombinant Protein of IGFN1
<b>Specificity</b>	The antibody detects endogenous IGFN1 protein.
<b>Formulation</b>	PBS, pH 7.4, containing 0.5%BSA, 0.02% sodium azide as Preservative and 50% Glycerol.
<b>Source</b>	Monoclonal, Mouse,IgG
<b>Purification</b>	The antibody was affinity-purified from mouse antiserum by affinity-chromatography using epitope-specific immunogen.
<b>Dilution</b>	WB 1:500-1:2000
<b>Concentration</b>	1 mg/ml
<b>Purity</b>	≥90%
<b>Storage Stability</b>	-20°C/1 year
<b>Synonyms</b>	Immunoglobulin-like and fibronectin type III domain-containing protein 1; EEF1A2-binding protein 1; KY-interacting protein 1
<b>Observed Band</b>	115kD
<b>Cell Pathway</b>	Nucleus . Cytoplasm, myofibril, sarcomere, Z line .
<b>Tissue Specificity</b>	Expressed in skeletal muscle.
<b>Function</b>	similarity:Contains 4 fibronectin type-III domains.,similarity:Contains 5 Ig-like (immunoglobulin-like) domains.,subunit:Interacts with KY.,tissue specificity:Expressed in skeletal muscle.,
<b>Background</b>	similarity:Contains 4 fibronectin type-III domains.,similarity:Contains 5 Ig-like (immunoglobulin-like) domains.,subunit:Interacts with KY.,tissue specificity:Expressed in skeletal muscle.,
<b>matters needing attention</b>	Avoid repeated freezing and thawing!
<b>Usage suggestions</b>	This product can be used in immunological reaction related experiments. For more information, please consult technical personnel.



## Products Images



Western Blot analysis of various cells using IGFN1 Monoclonal Antibody