

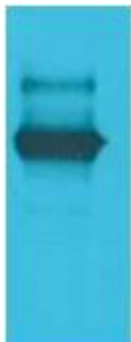


LexA DNA Binding Region Monoclonal Antibody

Catalog No	YP-mAb-01195
Isotype	IgG
Reactivity	0
Applications	WB
Gene Name	
Protein Name	
Immunogen	Recombinant Protein of LexA DNA Binding Region
Specificity	The antibody detects endogenous LexA DNA Binding Region protein.
Formulation	PBS, pH 7.4, containing 0.5%BSA, 0.02% sodium azide as Preservative and 50% Glycerol.
Source	Monoclonal, Mouse,IgG
Purification	The antibody was affinity-purified from mouse antiserum by affinity-chromatography using epitope-specific immunogen.
Dilution	WB 1:500-1:2000
Concentration	1 mg/ml
Purity	≥90%
Storage Stability	-20°C/1 year
Synonyms	YM3412
Observed Band	
Cell Pathway	
Tissue Specificity	
Function	
Background	LexA (EC 3. 1. 8) is a DNA binding protein, is associated with SOS response of cyanobacteria as well as other regulatory networks. Has been shown to directly regulate genes involved in carbon assimilation or controlled by carbon availability. In Synechocystis PCC 6803 LexA is not localised to the thylakoid membranes but to the inner region of the cytoplasm.
matters needing attention	Avoid repeated freezing and thawing!
Usage suggestions	This product can be used in immunological reaction related experiments. For more information, please consult technical personnel.



Products Images



Western Blot analysis of various cells using LexA DNA Binding Region Monoclonal Antibody