



ATP1AL1 Monoclonal Antibody

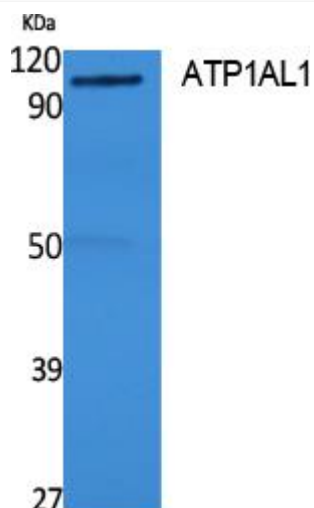
Catalog No	YP-mAb-00761
Isotype	IgG
Reactivity	Human;Rat
Applications	WB
Gene Name	ATP12A
Protein Name	Potassium-transporting ATPase alpha chain 2
Immunogen	Synthesized peptide derived from ATP1AL1 . at AA range: 380-460
Specificity	ATP1AL1 Monoclonal Antibody detects endogenous levels of ATP1AL1 protein.
Formulation	Liquid in PBS containing 50% glycerol, 0.5% BSA and 0.02% sodium azide.
Source	Monoclonal, Mouse,IgG
Purification	The antibody was affinity-purified from mouse antiserum by affinity-chromatography using epitope-specific immunogen.
Dilution	WB 1:500-1:2000
Concentration	1 mg/ml
Purity	≥90%
Storage Stability	-20°C/1 year
Synonyms	ATP12A; ATP1AL1; Potassium-transporting ATPase alpha chain 2; Non-gastric H(+)/K(+) ATPase subunit alpha; Proton pump
Observed Band	115kD
Cell Pathway	Apical cell membrane ; Multi-pass membrane protein .
Tissue Specificity	Expressed in airway epithelial cells (at protein level) (PubMed:29391451). Found in skin and kidney. Detected in prostate basal cells (at protein level). Expression is increased in benign prostate hyperplasia and tumor tissues (at protein level).
Function	catalytic activity:ATP + H(2)O + H(+)(In) + K(+)(Out) = ADP + phosphate + H(+)(Out) + K(+)(In).,function:Catalyzes the hydrolysis of ATP coupled with the exchange of H(+) and K(+) ions across the plasma membrane. Responsible for potassium absorption in various tissues.,similarity:Belongs to the cation transport ATPase (P-type) family. Type IIC subfamily.,subunit:Composed of two subunits: alpha (catalytic) and beta.,tissue specificity:Found in skin and kidney.,
Background	The protein encoded by this gene belongs to the family of P-type cation transport ATPases. This gene encodes a catalytic subunit of the ouabain-sensitive H+/K+-ATPase that catalyzes the hydrolysis of ATP coupled with the exchange of H(+) and K(+) ions across the plasma membrane. It is also responsible for potassium absorption in various tissues. Two transcript variants encoding different isoforms have been found for this gene. [provided by RefSeq, Jun 2010],

**matters needing attention**

Avoid repeated freezing and thawing!

Usage suggestions

This product can be used in immunological reaction related experiments. For more information, please consult technical personnel.

Products Images

Western Blot analysis of various cells using ATP1AL1 Monoclonal Antibody