



# Tom20 Monoclonal Antibody

<b>Catalog No</b>	YP-mAb-00750
<b>Isotype</b>	IgG
<b>Reactivity</b>	Human;Mouse;Rat
<b>Applications</b>	WB
<b>Gene Name</b>	TOMM20
<b>Protein Name</b>	Mitochondrial import receptor subunit TOM20 homolog
<b>Immunogen</b>	The antiserum was produced against synthesized peptide derived from human TOMM20. AA range:15-64
<b>Specificity</b>	Tom20 Monoclonal Antibody detects endogenous levels of Tom20 protein.
<b>Formulation</b>	Liquid in PBS containing 50% glycerol, 0.5% BSA and 0.02% sodium azide.
<b>Source</b>	Monoclonal, Mouse,IgG
<b>Purification</b>	The antibody was affinity-purified from mouse antiserum by affinity-chromatography using epitope-specific immunogen.
<b>Dilution</b>	WB 1:500-1:2000
<b>Concentration</b>	1 mg/ml
<b>Purity</b>	≥90%
<b>Storage Stability</b>	-20°C/1 year
<b>Synonyms</b>	TOMM20; KIAA0016; Mitochondrial import receptor subunit TOM20 homolog; Mitochondrial 20 kDa outer membrane protein; Outer mitochondrial membrane receptor Tom20
<b>Observed Band</b>	17kD
<b>Cell Pathway</b>	Mitochondrion outer membrane ; Single-pass membrane protein .
<b>Tissue Specificity</b>	Bone marrow,Brain,Cervix,Epithelium,Eye,Fibroblast,Pancreas
<b>Function</b>	function:Central component of the receptor complex responsible for the recognition and translocation of cytosolically synthesized mitochondrial preproteins. Together with tom22 functions as the transit peptide receptor at the surface of the mitochondrion outer membrane and facilitates the movement of preproteins into the tom40 translocation pore.,similarity:Belongs to the Tom20 family.,subunit:Forms part of the preprotein translocase complex of the outer mitochondrial membrane (TOM complex) which consists of at least 7 different proteins (TOMM5, TOMM6, TOMM7, TOMM20, TOMM22, TOMM40 and TOMM70). Interacts with TOM22.,
<b>Background</b>	function:Central component of the receptor complex responsible for the recognition and translocation of cytosolically synthesized mitochondrial preproteins. Together with tom22 functions as the transit peptide receptor at the



surface of the mitochondrion outer membrane and facilitates the movement of preproteins into the tom40 translocation pore.,similarity:Belongs to the Tom20 family.,subunit:Forms part of the preprotein translocase complex of the outer mitochondrial membrane (TOM complex) which consists of at least 7 different proteins (TOMM5, TOMM6, TOMM7, TOMM20, TOMM22, TOMM40 and TOMM70). Interacts with TOM22.,

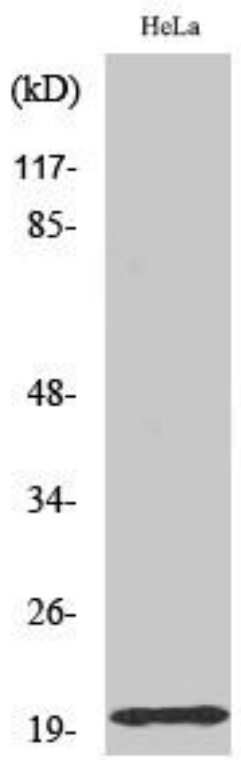
**matters needing attention**

Avoid repeated freezing and thawing!

**Usage suggestions**

This product can be used in immunological reaction related experiments. For more information, please consult technical personnel.

**Products Images**



Western Blot analysis of various cells using Tom20 Monoclonal Antibody