

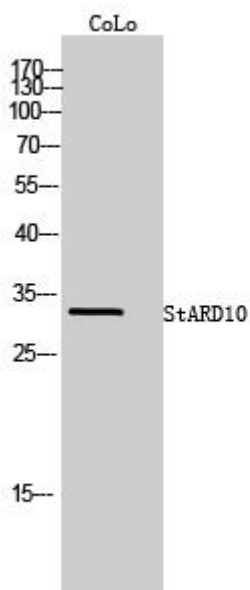


StARD10 Monoclonal Antibody

Catalog No	YP-mAb-00736
Isotype	IgG
Reactivity	Human;Mouse;Rat
Applications	WB
Gene Name	STARD10
Protein Name	PCTP-like protein
Immunogen	Synthesized peptide derived from the Internal region of human StARD10.
Specificity	StARD10 Monoclonal Antibody detects endogenous levels of StARD10 protein.
Formulation	Liquid in PBS containing 50% glycerol, 0.5% BSA and 0.02% sodium azide.
Source	Monoclonal, Mouse,IgG
Purification	The antibody was affinity-purified from mouse antiserum by affinity-chromatography using epitope-specific immunogen.
Dilution	WB 1:500-1:2000
Concentration	1 mg/ml
Purity	≥90%
Storage Stability	-20°C/1 year
Synonyms	STARD10; SDCCAG28; CGI-52; PCTP-like protein; PCTP-L; Antigen NY-CO-28; START domain-containing protein 10; StARD10; Serologically defined colon cancer antigen 28; StAR-related lipid transfer protein 10
Observed Band	33kD
Cell Pathway	Cell projection, cilium, flagellum . Cytoplasm . Membrane . In testis was predominantly detected at the flagella of elongated spermatids, with a strong signal also found at the tail of epididymal sperm (By similarity). Mainly cytosolic. .
Tissue Specificity	Colon carcinoma,Uterus,
Function	function:May play specific roles in sperm maturation or fertilization.,sequence caution:Various sequencing problems as well as a translation in a wrong frame.,similarity:Contains 1 START domain.,
Background	function:May play specific roles in sperm maturation or fertilization.,sequence caution:Various sequencing problems as well as a translation in a wrong frame.,similarity:Contains 1 START domain.,
matters needing attention	Avoid repeated freezing and thawing!

**Usage suggestions**

This product can be used in immunological reaction related experiments. For more information, please consult technical personnel.

Products Images

Western Blot analysis of various cells using StARD10 Monoclonal Antibody