

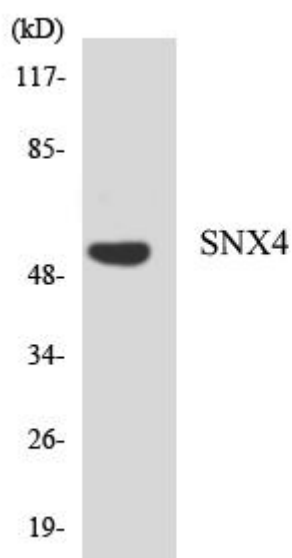


SNX4 Monoclonal Antibody

Catalog No	YP-mAb-00734
Isotype	IgG
Reactivity	Human;Mouse;Rat
Applications	WB
Gene Name	SNX4
Protein Name	Sorting nexin-4
Immunogen	The antiserum was produced against synthesized peptide derived from human SNX4. AA range:191-240
Specificity	SNX4 Monoclonal Antibody detects endogenous levels of SNX4 protein.
Formulation	Liquid in PBS containing 50% glycerol, 0.5% BSA and 0.02% sodium azide.
Source	Monoclonal, Mouse,IgG
Purification	The antibody was affinity-purified from mouse antiserum by affinity-chromatography using epitope-specific immunogen.
Dilution	WB 1:500-1:2000
Concentration	1 mg/ml
Purity	≥90%
Storage Stability	-20°C/1 year
Synonyms	SNX4; Sorting nexin-4
Observed Band	60kD
Cell Pathway	Early endosome membrane ; Peripheral membrane protein ; Cytoplasmic side . Also detected on a juxtannuclear endocytic recycling compartment (ERC) .
Tissue Specificity	Liver,Skin,
Function	function:May be involved in several stages of intracellular trafficking.,similarity:Belongs to the sorting nexin family.,similarity:Contains 1 PX (phox homology) domain.,
Background	This gene encodes a member of the sorting nexin family. Members of this family contain a phox (PX) domain, which is a phosphoinositide binding domain, and are involved in intracellular trafficking. This protein associated with the long isoform of the leptin receptor and with receptor tyrosine kinases for platelet-derived growth factor, insulin, and epidermal growth factor in cell cultures, but its function is unknown. This protein may form oligomeric complexes with family members. Two transcript variants, one protein coding and the other non-protein coding, have been found for this gene. [provided by RefSeq, Nov 2012],
matters needing attention	Avoid repeated freezing and thawing!

**Usage suggestions**

This product can be used in immunological reaction related experiments. For more information, please consult technical personnel.

Products Images

Western Blot analysis of various cells using SNX4 Monoclonal Antibody