

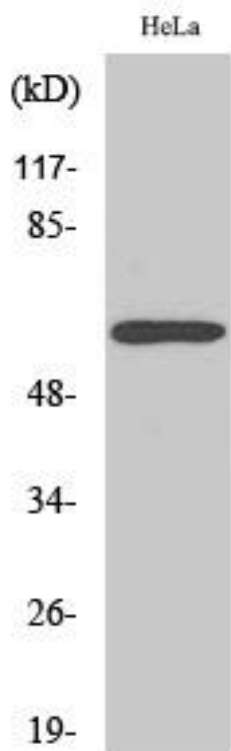


Rabaptin-5 β Monoclonal Antibody

Catalog No	YP-mAb-00717
Isotype	IgG
Reactivity	Human;Mouse;Rat
Applications	WB
Gene Name	RABEP2
Protein Name	Rab GTPase-binding effector protein 2
Immunogen	The antiserum was produced against synthesized peptide derived from human RABEP2. AA range:353-402
Specificity	Rabaptin-5 β Monoclonal Antibody detects endogenous levels of Rabaptin-5 β protein.
Formulation	Liquid in PBS containing 50% glycerol, 0.5% BSA and 0.02% sodium azide.
Source	Monoclonal, Mouse,IgG
Purification	The antibody was affinity-purified from mouse antiserum by affinity-chromatography using epitope-specific immunogen.
Dilution	WB 1:500-1:2000
Concentration	1 mg/ml
Purity	$\geq 90\%$
Storage Stability	-20°C/1 year
Synonyms	RABEP2; RABPT5B; Rab GTPase-binding effector protein 2; Rabaptin-5beta
Observed Band	64kD
Cell Pathway	Cytoplasm . Early endosome . Cytoplasm, cytoskeleton, microtubule organizing center, centrosome . Cytoplasm, cytoskeleton, cilium basal body .
Tissue Specificity	Hepatoma,Mammary gland,Testis,
Function	function:Plays a role in membrane trafficking and in homotypic early endosome fusion.,similarity:Belongs to the rabaptin family.,subunit:Heterodimer with RABGEF1. The dimer binds RAB5A that has been activated by GTP-binding.,
Background	function:Plays a role in membrane trafficking and in homotypic early endosome fusion.,similarity:Belongs to the rabaptin family.,subunit:Heterodimer with RABGEF1. The dimer binds RAB5A that has been activated by GTP-binding.,
matters needing attention	Avoid repeated freezing and thawing!
Usage suggestions	This product can be used in immunological reaction related experiments. For more information, please consult technical personnel.



Products Images



Western Blot analysis of various cells using Rabaptin-5
β Monoclonal Antibody