



# PNPase Monoclonal Antibody

<b>Catalog No</b>	YP-mAb-00714
<b>Isotype</b>	IgG
<b>Reactivity</b>	Human;Mouse
<b>Applications</b>	WB
<b>Gene Name</b>	PNPT1
<b>Protein Name</b>	Polyribonucleotide nucleotidyltransferase 1 mitochondrial
<b>Immunogen</b>	The antiserum was produced against synthesized peptide derived from human PNPT1. AA range:570-619
<b>Specificity</b>	PNPase Monoclonal Antibody detects endogenous levels of PNPase protein.
<b>Formulation</b>	Liquid in PBS containing 50% glycerol, 0.5% BSA and 0.02% sodium azide.
<b>Source</b>	Monoclonal, Mouse,IgG
<b>Purification</b>	The antibody was affinity-purified from mouse antiserum by affinity-chromatography using epitope-specific immunogen.
<b>Dilution</b>	WB 1:500-1:2000
<b>Concentration</b>	1 mg/ml
<b>Purity</b>	≥90%
<b>Storage Stability</b>	-20°C/1 year
<b>Synonyms</b>	PNPT1; PNPASE; Polyribonucleotide nucleotidyltransferase 1; mitochondrial; 3'-5' RNA exonuclease OLD35; PNPase old-35; Polynucleotide phosphorylase 1; PNPase 1; Polynucleotide phosphorylase-like protein
<b>Observed Band</b>	85kD
<b>Cell Pathway</b>	Cytoplasm . Mitochondrion matrix . Mitochondrion intermembrane space ; Peripheral membrane protein .
<b>Tissue Specificity</b>	Cervix,Epithelium,Melanoma,Skin,Teratocarcinoma,Urinary bla
<b>Function</b>	catalytic activity:RNA(n+1) + phosphate = RNA(n) + a nucleoside diphosphate.,function:Involved in mRNA degradation. Hydrolyzes single-stranded polyribonucleotides processively in the 3'- to 5'-direction.,induction:Up-regulated in cells upon senescence and terminal differentiation. Up-regulated after treatment with interferon beta (IFN-beta).,PTM:Phosphorylated upon DNA damage, probably by ATM or ATR.,similarity:Belongs to the polyribonucleotide nucleotidyltransferase family.,similarity:Contains 1 KH domain.,similarity:Contains 1 S1 motif domain.,subunit:Homotrimer (Potential). Interacts with TCL1A; the interaction has no effect on PNPT1 exonuclease activity.,
<b>Background</b>	The protein encoded by this gene belongs to the evolutionary conserved polynucleotide phosphorylase family comprised of phosphate dependent 3'→5' exonucleases implicated in RNA processing and



degradation. This enzyme is predominantly localized in the mitochondrial intermembrane space and is involved in import of RNA to mitochondria. Mutations in this gene have been associated with combined oxidative phosphorylation deficiency-13 and autosomal recessive nonsyndromic deafness-70. Related pseudogenes are found on chromosomes 3 and 7. [provided by RefSeq, Dec 2012],

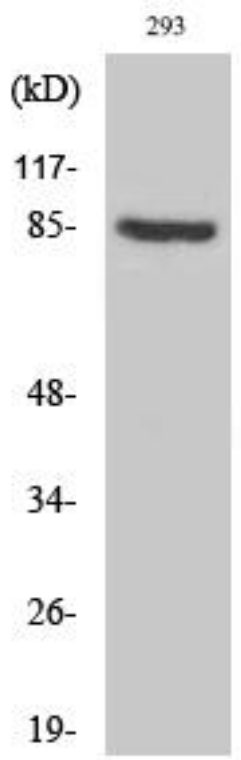
**matters needing attention**

Avoid repeated freezing and thawing!

**Usage suggestions**

This product can be used in immunological reaction related experiments. For more information, please consult technical personnel.

## Products Images



Western Blot analysis of various cells using PNPase Monoclonal Antibody