



# NSF Monoclonal Antibody

<b>Catalog No</b>	YP-mAb-00707
<b>Isotype</b>	IgG
<b>Reactivity</b>	Human;Mouse;Rat
<b>Applications</b>	WB
<b>Gene Name</b>	NSF
<b>Protein Name</b>	Vesicle-fusing ATPase
<b>Immunogen</b>	Synthesized peptide derived from NSF . at AA range: 110-190
<b>Specificity</b>	NSF Monoclonal Antibody detects endogenous levels of NSF protein.
<b>Formulation</b>	Liquid in PBS containing 50% glycerol, 0.5% BSA and 0.02% sodium azide.
<b>Source</b>	Monoclonal, Mouse,IgG
<b>Purification</b>	The antibody was affinity-purified from mouse antiserum by affinity-chromatography using epitope-specific immunogen.
<b>Dilution</b>	WB 1:500-1:2000
<b>Concentration</b>	1 mg/ml
<b>Purity</b>	≥90%
<b>Storage Stability</b>	-20°C/1 year
<b>Synonyms</b>	NSF; Vesicle-fusing ATPase; N-ethylmaleimide-sensitive fusion protein; NEM-sensitive fusion protein; Vesicular-fusion protein NSF
<b>Observed Band</b>	75kD
<b>Cell Pathway</b>	Cytoplasm.
<b>Tissue Specificity</b>	Brain,Kidney,Lung,
<b>Function</b>	catalytic activity:ATP + H(2)O = ADP + phosphate.,cofactor:Binds 1 magnesium ion per subunit.,function:Required for vesicle-mediated transport. Catalyzes the fusion of transport vesicles within the Golgi cisternae. Is also required for transport from the endoplasmic reticulum to the Golgi stack. Seem to function as a fusion protein required for the delivery of cargo proteins to all compartments of the Golgi stack independent of vesicle origin.,similarity:Belongs to the AAA ATPase family.,subunit:Homohexamer. Interacts with GABARAP and GABARAPL2.,
<b>Background</b>	catalytic activity:ATP + H(2)O = ADP + phosphate.,cofactor:Binds 1 magnesium ion per subunit.,function:Required for vesicle-mediated transport. Catalyzes the fusion of transport vesicles within the Golgi cisternae. Is also required for transport from the endoplasmic reticulum to the Golgi stack. Seem to function as a fusion protein required for the delivery of cargo proteins to all compartments of the Golgi stack independent of vesicle origin.,similarity:Belongs to the AAA ATPase family.,subunit:Homohexamer. Interacts with GABARAP and GABARAPL2.,

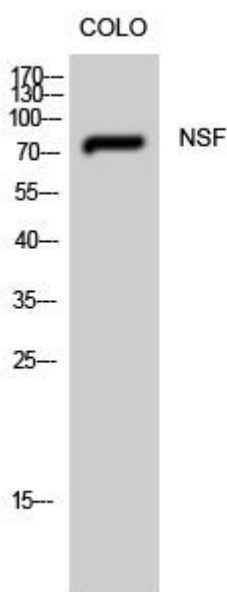
**matters needing attention**

Avoid repeated freezing and thawing!

**Usage suggestions**

This product can be used in immunological reaction related experiments. For more information, please consult technical personnel.

## Products Images



Western Blot analysis of various cells using NSF Monoclonal Antibody