

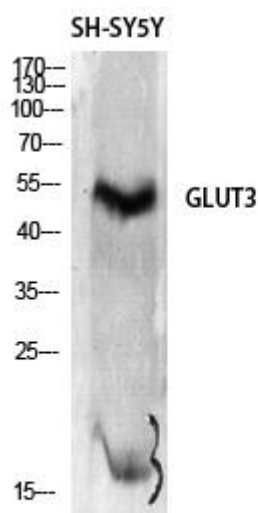


Glut3 Monoclonal Antibody

Catalog No	YP-mAb-00698
Isotype	IgG
Reactivity	Human;Rat;Mouse;
Applications	WB
Gene Name	SLC2A3
Protein Name	Solute carrier family 2 facilitated glucose transporter member 3
Immunogen	The antiserum was produced against synthesized peptide derived from human GLUT3. AA range:447-496
Specificity	Glut3 Monoclonal Antibody detects endogenous levels of Glut3 protein.
Formulation	Liquid in PBS containing 50% glycerol, 0.5% BSA and 0.02% sodium azide.
Source	Monoclonal, Mouse,IgG
Purification	The antibody was affinity-purified from mouse antiserum by affinity-chromatography using epitope-specific immunogen.
Dilution	WB 1:500-1:2000
Concentration	1 mg/ml
Purity	≥90%
Storage Stability	-20°C/1 year
Synonyms	SLC2A3; GLUT3; Solute carrier family 2; facilitated glucose transporter member 3; Glucose transporter type 3, brain; GLUT-3
Observed Band	55kD
Cell Pathway	Cell membrane ; Multi-pass membrane protein . Perikaryon . Cell projection . Localized to densely spaced patches along neuronal processes. .
Tissue Specificity	Highly expressed in brain. Expressed in many tissues.
Function	function:Facilitative glucose transporter. Probably a neuronal glucose transporter.,similarity:Belongs to the major facilitator superfamily. Sugar transporter (TC 2.A.1.1) family. Glucose transporter subfamily.,tissue specificity:Highly expressed in brain. Expressed in many tissues.,
Background	function:Facilitative glucose transporter. Probably a neuronal glucose transporter.,similarity:Belongs to the major facilitator superfamily. Sugar transporter (TC 2.A.1.1) family. Glucose transporter subfamily.,tissue specificity:Highly expressed in brain. Expressed in many tissues.,
matters needing attention	Avoid repeated freezing and thawing!

**Usage suggestions**

This product can be used in immunological reaction related experiments. For more information, please consult technical personnel.

Products Images

Western Blot analysis of various cells using Glut3 Monoclonal Antibody