

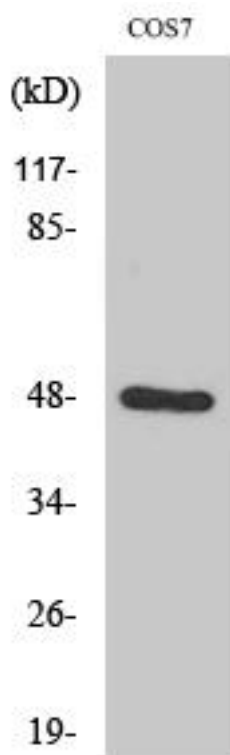


Endophilin B2 Monoclonal Antibody

Catalog No	YP-mAb-00694
Isotype	IgG
Reactivity	Human;Mouse;Rat;Monkey
Applications	WB
Gene Name	SH3GLB2
Protein Name	Endophilin-B2
Immunogen	The antiserum was produced against synthesized peptide derived from human SH3GLB2. AA range:131-180
Specificity	Endophilin B2 Monoclonal Antibody detects endogenous levels of Endophilin B2 protein.
Formulation	Liquid in PBS containing 50% glycerol, 0.5% BSA and 0.02% sodium azide.
Source	Monoclonal, Mouse,IgG
Purification	The antibody was affinity-purified from mouse antiserum by affinity-chromatography using epitope-specific immunogen.
Dilution	WB 1:500-1:2000
Concentration	1 mg/ml
Purity	≥90%
Storage Stability	-20°C/1 year
Synonyms	SH3GLB2; KIAA1848; PP578; Endophilin-B2; SH3 domain-containing GRB2-like protein B2
Observed Band	48kD
Cell Pathway	Cytoplasm .
Tissue Specificity	Detected in skeletal muscle, adipocyte, brain, lung, colon and mammary gland.
Function	similarity:Belongs to the endophilin family.,similarity:Contains 1 BAR domain.,similarity:Contains 1 SH3 domain.,subunit:Homodimer, and heterodimer with SH3GLB1.,tissue specificity:Detected in skeletal muscle, adipocyte, brain, lung, colon and mammary gland.,
Background	similarity:Belongs to the endophilin family.,similarity:Contains 1 BAR domain.,similarity:Contains 1 SH3 domain.,subunit:Homodimer, and heterodimer with SH3GLB1.,tissue specificity:Detected in skeletal muscle, adipocyte, brain, lung, colon and mammary gland.,
matters needing attention	Avoid repeated freezing and thawing!

**Usage suggestions**

This product can be used in immunological reaction related experiments. For more information, please consult technical personnel.

Products Images

Western Blot analysis of various cells using Endophilin B2 Monoclonal Antibody