

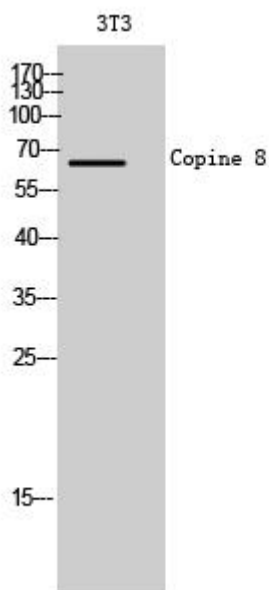


Copine 8 Monoclonal Antibody

Catalog No	YP-mAb-00688
Isotype	IgG
Reactivity	Human;Mouse;Rat
Applications	WB
Gene Name	CPNE8
Protein Name	Copine-8
Immunogen	The antiserum was produced against synthesized peptide derived from human CPNE8. AA range:11-60
Specificity	Copine 8 Monoclonal Antibody detects endogenous levels of Copine 8 protein.
Formulation	Liquid in PBS containing 50% glycerol, 0.5% BSA and 0.02% sodium azide.
Source	Monoclonal, Mouse,IgG
Purification	The antibody was affinity-purified from mouse antiserum by affinity-chromatography using epitope-specific immunogen.
Dilution	WB 1:500-1:2000
Concentration	1 mg/ml
Purity	≥90%
Storage Stability	-20°C/1 year
Synonyms	CPNE8; Copine-8; Copine VIII
Observed Band	65kD
Cell Pathway	extracellular exosome,
Tissue Specificity	Brain,Hippocampus,
Function	function:May function in membrane trafficking. Exhibits calcium-dependent phospholipid binding properties.,PTM:Phosphorylated upon DNA damage, probably by ATM or ATR.,similarity:Belongs to the copine family.,similarity:Contains 1 VWFA domain.,similarity:Contains 2 C2 domains.,
Background	copine 8(CPNE8) Homo sapiens Calcium-dependent membrane-binding proteins may regulate molecular events at the interface of the cell membrane and cytoplasm. This gene is one of several genes that encode a calcium-dependent protein containing two N-terminal type II C2 domains and an integrin A domain-like sequence in the C-terminus. [provided by RefSeq, Jul 2008],
matters needing attention	Avoid repeated freezing and thawing!

**Usage suggestions**

This product can be used in immunological reaction related experiments. For more information, please consult technical personnel.

Products Images

Western Blot analysis of various cells using Copine 8 Monoclonal Antibody