

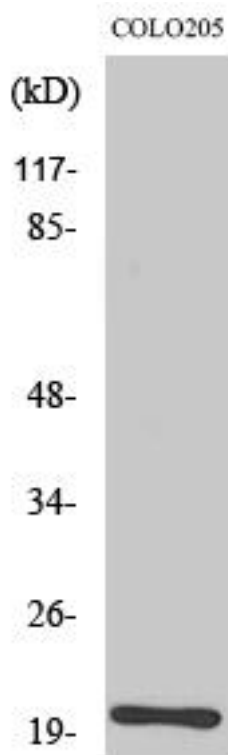


BET3 Monoclonal Antibody

Catalog No	YP-mAb-00683
Isotype	IgG
Reactivity	Human;Mouse;Rat
Applications	WB
Gene Name	TRAPPC3
Protein Name	Trafficking protein particle complex subunit 3
Immunogen	The antiserum was produced against synthesized peptide derived from human TRAPPC3. AA range:131-180
Specificity	BET3 Monoclonal Antibody detects endogenous levels of BET3 protein.
Formulation	Liquid in PBS containing 50% glycerol, 0.5% BSA and 0.02% sodium azide.
Source	Monoclonal, Mouse,IgG
Purification	The antibody was affinity-purified from mouse antiserum by affinity-chromatography using epitope-specific immunogen.
Dilution	WB 1:500-1:2000
Concentration	1 mg/ml
Purity	≥90%
Storage Stability	-20°C/1 year
Synonyms	TRAPPC3; BET3; CDABP0066; Trafficking protein particle complex subunit 3; BET3 homolog
Observed Band	22kD
Cell Pathway	Golgi apparatus, cis-Golgi network . Endoplasmic reticulum .
Tissue Specificity	Colon,Leukemia,Placenta,
Function	function:May play a role in vesicular transport from endoplasmic reticulum to Golgi.,similarity:Belongs to the TRAPP small subunits family. BET3 subfamily.,subunit:Homodimer. Heterodimer with TRAPPC6A. Part of the multisubunit TRAPP (transport protein particle) complex.,
Background	trafficking protein particle complex 3(TRAPPC3) Homo sapiens This gene encodes a component of the trafficking protein particle complex, which tethers transport vesicles to the cis-Golgi membrane. The encoded protein participates in the regulation of transport from the endoplasmic reticulum to the Golgi apparatus. Alternative splicing results in multiple transcript variants. [provided by RefSeq, Aug 2012],
matters needing attention	Avoid repeated freezing and thawing!

**Usage suggestions**

This product can be used in immunological reaction related experiments. For more information, please consult technical personnel.

Products Images

Western Blot analysis of various cells using BET3 Monoclonal Antibody