



BCAS2 Monoclonal Antibody

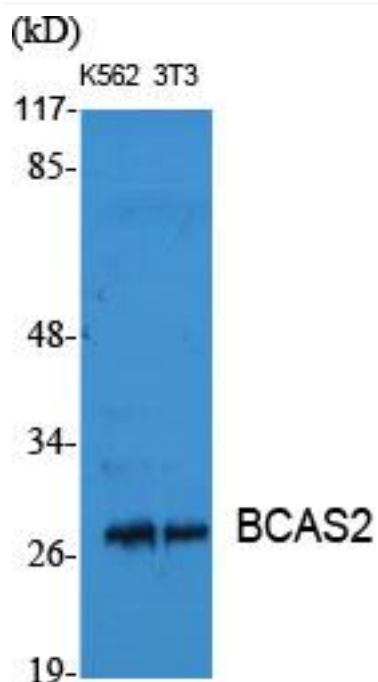
Catalog No	YP-mAb-00680
Isotype	IgG
Reactivity	Human;Mouse;Rat;Monkey
Applications	WB
Gene Name	BCAS2
Protein Name	Pre-mRNA-splicing factor SPF27
Immunogen	The antiserum was produced against synthesized peptide derived from human BCAS2. AA range:176-225
Specificity	BCAS2 Monoclonal Antibody detects endogenous levels of BCAS2 protein.
Formulation	Liquid in PBS containing 50% glycerol, 0.5% BSA and 0.02% sodium azide.
Source	Monoclonal, Mouse,IgG
Purification	The antibody was affinity-purified from mouse antiserum by affinity-chromatography using epitope-specific immunogen.
Dilution	WB 1:500-1:2000
Concentration	1 mg/ml
Purity	≥90%
Storage Stability	-20°C/1 year
Synonyms	BCAS2; DAM1; Pre-mRNA-splicing factor SPF27; Breast carcinoma-amplified sequence 2; DNA amplified in mammary carcinoma 1 protein; Spliceosome-associated protein SPF 27
Observed Band	27kD
Cell Pathway	Nucleus . Nucleus, nucleolus .
Tissue Specificity	Ubiquitously expressed.
Function	function:Involved in mRNA splicing.,similarity:Belongs to the SPF27 family.,subunit:Associated with the spliceosome.,tissue specificity:Ubiquitously expressed.,
Background	function:Involved in mRNA splicing.,similarity:Belongs to the SPF27 family.,subunit:Associated with the spliceosome.,tissue specificity:Ubiquitously expressed.,
matters needing attention	Avoid repeated freezing and thawing!



Usage suggestions

This product can be used in immunological reaction related experiments. For more information, please consult technical personnel.

Products Images



Western Blot analysis of various cells using BCAS2 Monoclonal Antibody