



Amphiphysin I Monoclonal Antibody

Catalog No	YP-mAb-00664
Isotype	IgG
Reactivity	Human;Mouse;Rat
Applications	WB
Gene Name	AMPH
Protein Name	Amphiphysin
Immunogen	The antiserum was produced against synthesized peptide derived from human AMPH. AA range:131-180
Specificity	Amphiphysin I Monoclonal Antibody detects endogenous levels of Amphiphysin I protein.
Formulation	Liquid in PBS containing 50% glycerol, 0.5% BSA and 0.02% sodium azide.
Source	Monoclonal, Mouse,IgG
Purification	The antibody was affinity-purified from mouse antiserum by affinity-chromatography using epitope-specific immunogen.
Dilution	WB 1:500-1:2000
Concentration	1 mg/ml
Purity	≥90%
Storage Stability	-20°C/1 year
Synonyms	AMPH; AMPH1; Amphiphysin
Observed Band	76kD
Cell Pathway	Cytoplasmic vesicle, secretory vesicle, synaptic vesicle membrane; Peripheral membrane protein; Cytoplasmic side. Cytoplasm, cytoskeleton.
Tissue Specificity	Neurons, certain endocrine cell types and spermatocytes.
Function	disease:Antibodies against AMPH are detected in patients with stiff-man syndrome, a rare disease of the central nervous system characterized by progressive rigidity of the body musculature with superimposed painful spasms.,function:May participate in mechanisms of regulated exocytosis in synapses and certain endocrine cell types. May control the properties of the membrane associated cytoskeleton.,similarity:Contains 1 BAR domain.,similarity:Contains 1 SH3 domain.,subunit:Heterodimer with BIN1. Binds SH3GLB1 and AP2A2.,tissue specificity:Neurons, certain endocrine cell types and spermatocytes.,
Background	This gene encodes a protein associated with the cytoplasmic surface of synaptic vesicles. A subset of patients with stiff-man syndrome who were also affected by breast cancer are positive for autoantibodies against this protein. Alternate splicing of this gene results in two transcript variants encoding different isoforms. Additional splice variants have been described, but their full length sequences



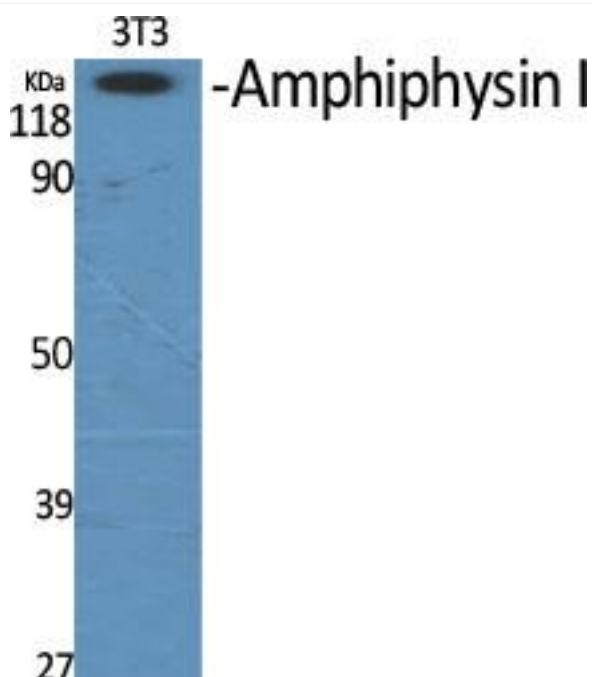
have not been determined. A pseudogene of this gene is found on chromosome 11.[provided by RefSeq, Nov 2010],

matters needing attention

Avoid repeated freezing and thawing!

Usage suggestions

This product can be used in immunological reaction related experiments. For more information, please consult technical personnel.

Products Images

Western Blot analysis of various cells using Amphiphysin I Monoclonal Antibody