



# ARP Monoclonal Antibody

<b>Catalog No</b>	YP-mAb-00572
<b>Isotype</b>	IgG
<b>Reactivity</b>	Human;Mouse;Rat
<b>Applications</b>	WB
<b>Gene Name</b>	MANF
<b>Protein Name</b>	Mesencephalic astrocyte-derived neurotrophic factor
<b>Immunogen</b>	The antiserum was produced against synthesized peptide derived from the Internal region of human MANF. AA range:11-60
<b>Specificity</b>	ARP Monoclonal Antibody detects endogenous levels of ARP protein.
<b>Formulation</b>	Liquid in PBS containing 50% glycerol, 0.5% BSA and 0.02% sodium azide.
<b>Source</b>	Monoclonal, Mouse,IgG
<b>Purification</b>	The antibody was affinity-purified from mouse antiserum by affinity-chromatography using epitope-specific immunogen.
<b>Dilution</b>	WB 1:500-1:2000
<b>Concentration</b>	1 mg/ml
<b>Purity</b>	≥90%
<b>Storage Stability</b>	-20°C/1 year
<b>Synonyms</b>	MANF; ARMET; ARP; Mesencephalic astrocyte-derived neurotrophic factor; Arginine-rich protein; Protein ARMET
<b>Observed Band</b>	20kD
<b>Cell Pathway</b>	Secreted . Endoplasmic reticulum lumen . Sarcoplasmic reticulum lumen . Retained in the endoplasmic reticulum (ER), and sarcoplasmic reticulum (SR) under normal conditions (PubMed:22637475). Up-regulated and secreted by the ER/SR in response to ER stress and hypoxia (PubMed:22637475, PubMed:29497057). .
<b>Tissue Specificity</b>	Testis,
<b>Function</b>	response to unfolded protein, response to organic substance, response to protein stimulus,
<b>Background</b>	The protein encoded by this gene is localized in the endoplasmic reticulum (ER) and golgi, and is also secreted. Reducing expression of this gene increases susceptibility to ER stress-induced death and results in cell proliferation. Activity of this protein is important in promoting the survival of dopaminergic neurons. The presence of polymorphisms in the N-terminal arginine-rich region, including a specific mutation that changes an ATG start codon to AGG, have been reported in a variety of solid tumors; however, these polymorphisms were later shown to exist in normal tissues and are thus no longer thought to be tumor-related. [provided by



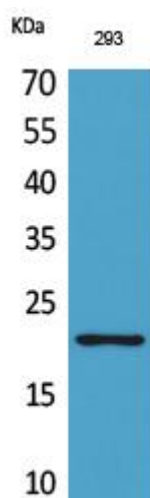
RefSeq, Apr 2014],

**matters needing attention**

Avoid repeated freezing and thawing!

**Usage suggestions**

This product can be used in immunological reaction related experiments. For more information, please consult technical personnel.

**Products Images**

Western Blot analysis of various cells using ARP Monoclonal Antibody