

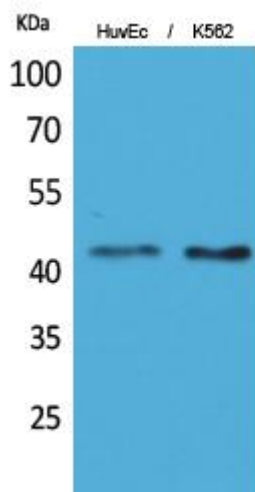


# Layilin Monoclonal Antibody

<b>Catalog No</b>	YP-mAb-00570
<b>Isotype</b>	IgG
<b>Reactivity</b>	Human;Mouse;Rat
<b>Applications</b>	WB
<b>Gene Name</b>	LAYN
<b>Protein Name</b>	Layilin
<b>Immunogen</b>	The antiserum was produced against synthesized peptide derived from the Internal region of human LAYN. AA range:71-120
<b>Specificity</b>	Layilin Monoclonal Antibody detects endogenous levels of Layilin protein.
<b>Formulation</b>	Liquid in PBS containing 50% glycerol, 0.5% BSA and 0.02% sodium azide.
<b>Source</b>	Monoclonal, Mouse,IgG
<b>Purification</b>	The antibody was affinity-purified from mouse antiserum by affinity-chromatography using epitope-specific immunogen.
<b>Dilution</b>	WB 1:500-1:2000
<b>Concentration</b>	1 mg/ml
<b>Purity</b>	≥90%
<b>Storage Stability</b>	-20°C/1 year
<b>Synonyms</b>	LAYN; Layilin
<b>Observed Band</b>	43kD
<b>Cell Pathway</b>	Membrane ; Single-pass type I membrane protein . Colocalizes with TLN1 at the membrane ruffles. .
<b>Tissue Specificity</b>	Brain,
<b>Function</b>	domain:The C-terminal domain interacts with the N-terminal domain of RDX.,function:Receptor for hyaluronate.,similarity:Contains 1 C-type lectin domain.,subcellular location:Colocalizes with TLN1 at the membrane ruffles.,subunit:Interacts with NF2, RDX and TLN1.,
<b>Background</b>	domain:The C-terminal domain interacts with the N-terminal domain of RDX.,function:Receptor for hyaluronate.,similarity:Contains 1 C-type lectin domain.,subcellular location:Colocalizes with TLN1 at the membrane ruffles.,subunit:Interacts with NF2, RDX and TLN1.,
<b>matters needing attention</b>	Avoid repeated freezing and thawing!

**Usage suggestions**

This product can be used in immunological reaction related experiments. For more information, please consult technical personnel.

**Products Images**

Western Blot analysis of various cells using Layilin Monoclonal Antibody