



# XRCC3 Monoclonal Antibody

<b>Catalog No</b>	YP-mAb-00553
<b>Isotype</b>	IgG
<b>Reactivity</b>	Human;Rat;Mouse;
<b>Applications</b>	WB
<b>Gene Name</b>	XRCC3
<b>Protein Name</b>	DNA repair protein XRCC3
<b>Immunogen</b>	The antiserum was produced against synthesized peptide derived from human XRCC3. AA range:41-90
<b>Specificity</b>	XRCC3 Monoclonal Antibody detects endogenous levels of XRCC3 protein.
<b>Formulation</b>	Liquid in PBS containing 50% glycerol, 0.5% BSA and 0.02% sodium azide.
<b>Source</b>	Monoclonal, Mouse,IgG
<b>Purification</b>	The antibody was affinity-purified from mouse antiserum by affinity-chromatography using epitope-specific immunogen.
<b>Dilution</b>	WB 1:500-1:2000
<b>Concentration</b>	1 mg/ml
<b>Purity</b>	≥90%
<b>Storage Stability</b>	-20°C/1 year
<b>Synonyms</b>	XRCC3; DNA repair protein XRCC3; X-ray repair cross-complementing protein 3
<b>Observed Band</b>	38kD
<b>Cell Pathway</b>	Nucleus. Cytoplasm. Cytoplasm, perinuclear region. Mitochondrion. Accumulates in discrete nuclear foci prior to DNA damage, and these foci persist throughout the time course of DNA repair.
<b>Tissue Specificity</b>	Cerebellum,Cervix carcinoma,Lymph,Muscle,Neuroblastoma,Placenta,
<b>Function</b>	disease:Met-241 is associated with the development of cutaneous malignant melanoma.,function:Involved in the homologous recombination repair (HRR) pathway of double-stranded DNA, thought to repair chromosomal fragmentation, translocations and deletions.,PTM:Phosphorylated upon DNA damage, probably by ATM or ATR.,similarity:Belongs to the recA family. RAD51 subfamily.,subunit:Interacts with RAD51C and RAD51. Part of a complex consisting of RAD51B, RAD51C, RAD51D, XRCC2 and XRCC3.,
<b>Background</b>	This gene encodes a member of the RecA/Rad51-related protein family that participates in homologous recombination to maintain chromosome stability and repair DNA damage. This gene functionally complements Chinese hamster irs1SF, a repair-deficient mutant that exhibits hypersensitivity to a number of different DNA-damaging agents and is chromosomally unstable. A rare microsatellite polymorphism in this gene is associated with cancer in patients of



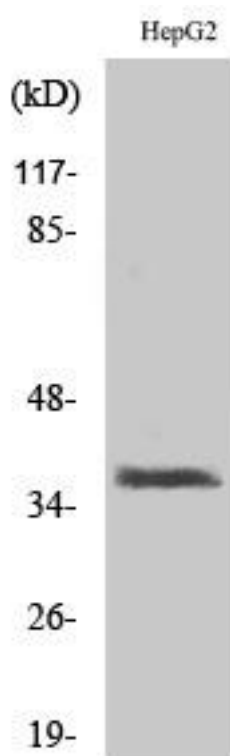
varying radiosensitivity. Alternatively spliced transcript variants encoding the same protein have been identified. [provided by RefSeq, Jul 2008],

**matters needing attention**

Avoid repeated freezing and thawing!

**Usage suggestions**

This product can be used in immunological reaction related experiments. For more information, please consult technical personnel.

**Products Images**

Western Blot analysis of various cells using XRCC3 Monoclonal Antibody