

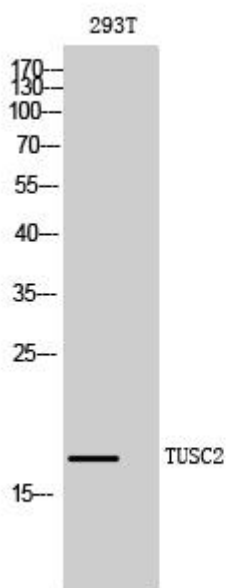


TUSC2 Monoclonal Antibody

Catalog No	YP-mAb-00545
Isotype	IgG
Reactivity	Human;Mouse
Applications	WB
Gene Name	TUSC2
Protein Name	Tumor suppressor candidate 2
Immunogen	The antiserum was produced against synthesized peptide derived from human TUSC2. AA range:41-90
Specificity	TUSC2 Monoclonal Antibody detects endogenous levels of TUSC2 protein.
Formulation	Liquid in PBS containing 50% glycerol, 0.5% BSA and 0.02% sodium azide.
Source	Monoclonal, Mouse,IgG
Purification	The antibody was affinity-purified from mouse antiserum by affinity-chromatography using epitope-specific immunogen.
Dilution	WB 1:500-1:2000
Concentration	1 mg/ml
Purity	≥90%
Storage Stability	-20°C/1 year
Synonyms	TUSC2; C3orf11; FUS1; LGCC; PDAP2; Tumor suppressor candidate 2; Fusion 1 protein; Fus-1 protein; PDGFA-associated protein 2
Observed Band	12kD
Cell Pathway	mitochondrion,
Tissue Specificity	Strong expression in heart, lung, skeletal muscle, kidney, and pancreas, followed by brain and liver, lowest levels in placenta.
Function	function:May function as a tumor suppressor, inhibiting colony formation, causing G1 arrest and ultimately inducing apoptosis in homozygous 3p21.3 120-kb region-deficient cells.,PTM:Myristoylation is required for tumor suppressor activity.,similarity:Belongs to the TUSC2 family.,tissue specificity:Strong expression in heart, lung, skeletal muscle, kidney, and pancreas, followed by brain and liver, lowest levels in placenta.,
Background	This gene is a highly conserved lung cancer candidate gene. No other information about this gene is currently available. [provided by RefSeq, Jul 2008],
matters needing attention	Avoid repeated freezing and thawing!

**Usage suggestions**

This product can be used in immunological reaction related experiments. For more information, please consult technical personnel.

Products Images

Western Blot analysis of various cells using TUSC2 Monoclonal Antibody