



TGase2 Monoclonal Antibody

Catalog No	YP-mAb-00533
Isotype	IgG
Reactivity	Human;Mouse
Applications	WB
Gene Name	TGM2
Protein Name	Protein-glutamine gamma-glutamyltransferase 2
Immunogen	The antiserum was produced against synthesized peptide derived from human Transglutaminase 2. AA range:1-50
Specificity	TGase2 Monoclonal Antibody detects endogenous levels of TGase2 protein.
Formulation	Liquid in PBS containing 50% glycerol, 0.5% BSA and 0.02% sodium azide.
Source	Monoclonal, Mouse,IgG
Purification	The antibody was affinity-purified from mouse antiserum by affinity-chromatography using epitope-specific immunogen.
Dilution	WB 1:500-1:2000
Concentration	1 mg/ml
Purity	≥90%
Storage Stability	-20°C/1 year
Synonyms	TGM2; Protein-glutamine gamma-glutamyltransferase 2; Tissue transglutaminase; Transglutaminase C; TG(C); TGC; TGase C; Transglutaminase H; TGase H; Transglutaminase-2; TGase-2
Observed Band	90kD
Cell Pathway	Cytoplasm, cytosol . Nucleus . Chromosome . Secreted, extracellular space, extracellular matrix . Cell membrane . Mitochondrion . Mainly localizes to the cytosol (PubMed:9575137). Present at much lower level in the nucleus and chromatin (PubMed:9575137). Also secreted via a non-classical secretion pathway to the extracellular matrix (PubMed:27270573). .; [Isoform 2]: Cytoplasm, perinuclear region .
Tissue Specificity	Brain,Colon adenocarcinoma,Endothelial cell,Kidney,Liver,Lymph node,Ovarian carcino
Function	catalytic activity:Protein glutamine + alkylamine = protein N(5)-alkylglutamine + NH(3).,cofactor:Binds 1 calcium ion per subunit.,disease:Defects in TGM2 are involved in early-onset diabetes type 2.,function:Catalyzes the cross-linking of proteins and the conjugation of polyamines to proteins.,induction:By retinoic acid.,online information:Tissue transglutaminase entry,similarity:Belongs to the transglutaminase superfamily. Transglutaminase family.,subunit:Monomer.,



Background

Transglutaminases are enzymes that catalyze the crosslinking of proteins by epsilon-gamma glutamyl lysine isopeptide bonds. While the primary structure of transglutaminases is not conserved, they all have the same amino acid sequence at their active sites and their activity is calcium-dependent. The protein encoded by this gene acts as a monomer, is induced by retinoic acid, and appears to be involved in apoptosis. Finally, the encoded protein is the autoantigen implicated in celiac disease. Two transcript variants encoding different isoforms have been found for this gene. [provided by RefSeq, Jul 2008],

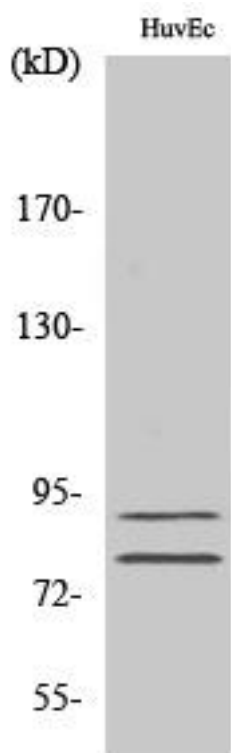
matters needing attention

Avoid repeated freezing and thawing!

Usage suggestions

This product can be used in immunological reaction related experiments. For more information, please consult technical personnel.

Products Images



Western Blot analysis of various cells using TGase2 Monoclonal Antibody