

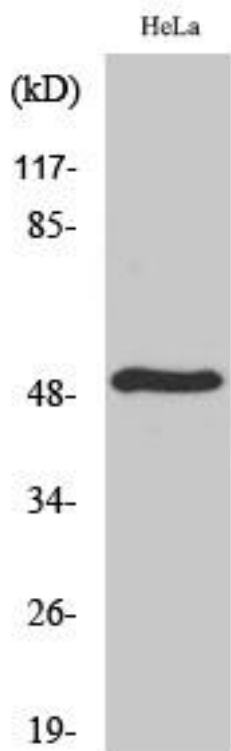


# TDE2L Monoclonal Antibody

<b>Catalog No</b>	YP-mAb-00532
<b>Isotype</b>	IgG
<b>Reactivity</b>	Human;Mouse;Rat
<b>Applications</b>	WB
<b>Gene Name</b>	SERINC2
<b>Protein Name</b>	Serine incorporator 2
<b>Immunogen</b>	The antiserum was produced against synthesized peptide derived from human SERC2. AA range:341-390
<b>Specificity</b>	TDE2L Monoclonal Antibody detects endogenous levels of TDE2L protein.
<b>Formulation</b>	Liquid in PBS containing 50% glycerol, 0.5% BSA and 0.02% sodium azide.
<b>Source</b>	Monoclonal, Mouse,IgG
<b>Purification</b>	The antibody was affinity-purified from mouse antiserum by affinity-chromatography using epitope-specific immunogen.
<b>Dilution</b>	WB 1:500-1:2000
<b>Concentration</b>	1 mg/ml
<b>Purity</b>	≥90%
<b>Storage Stability</b>	-20°C/1 year
<b>Synonyms</b>	SERINC2; TDE2L; FKSG84; Serine incorporator 2; Tumor differentially expressed protein 2-like
<b>Observed Band</b>	55kD
<b>Cell Pathway</b>	Membrane ; Multi-pass membrane protein .
<b>Tissue Specificity</b>	Colon,Liver,Pancreas,Uterus,
<b>Function</b>	similarity:Belongs to the TDE1 family.,
<b>Background</b>	similarity:Belongs to the TDE1 family.,
<b>matters needing attention</b>	Avoid repeated freezing and thawing!
<b>Usage suggestions</b>	This product can be used in immunological reaction related experiments. For more information, please consult technical personnel.



## Products Images



Western Blot analysis of various cells using TDE2L Monoclonal Antibody