



# pHyde Monoclonal Antibody

<b>Catalog No</b>	YP-mAb-00492
<b>Isotype</b>	IgG
<b>Reactivity</b>	Human;Mouse;Rat
<b>Applications</b>	WB
<b>Gene Name</b>	STEAP3
<b>Protein Name</b>	Metalloreductase STEAP3
<b>Immunogen</b>	The antiserum was produced against synthesized peptide derived from human STEA3. AA range:421-470
<b>Specificity</b>	pHyde Monoclonal Antibody detects endogenous levels of pHyde protein.
<b>Formulation</b>	Liquid in PBS containing 50% glycerol, 0.5% BSA and 0.02% sodium azide.
<b>Source</b>	Monoclonal, Mouse,IgG
<b>Purification</b>	The antibody was affinity-purified from mouse antiserum by affinity-chromatography using epitope-specific immunogen.
<b>Dilution</b>	WB 1:500-1:2000
<b>Concentration</b>	1 mg/ml
<b>Purity</b>	≥90%
<b>Storage Stability</b>	-20°C/1 year
<b>Synonyms</b>	STEAP3; TSAP6; Metalloreductase STEAP3; Dudulin-2; Six-transmembrane epithelial antigen of prostate 3; Tumor suppressor-activated pathway protein 6; hTSAP6; pHyde; hpHyde
<b>Observed Band</b>	54kD
<b>Cell Pathway</b>	Endosome membrane ; Multi-pass membrane protein . Localizes to vesicular-like structures at the plasma membrane and around the nucleus.
<b>Tissue Specificity</b>	Expressed in adult bone marrow, placenta, liver, skeletal muscle and pancreas. Down-regulated in hepatocellular carcinoma.
<b>Function</b>	caution:Was initially thought to have tumor suppressor function in prostate cancer. However, it was shown that it is probably not the case (PubMed:12866033).,cofactor:FAD.,function:Endosomal ferrireductase required for efficient transferrin-dependent iron uptake in erythroid cells. Participates in erythroid iron homeostasis by reducing Fe(3+) to Fe(2+). Can also reduce of Cu(2+) to Cu(1+), suggesting that it participates in copper homeostasis. Uses NAD(+) as acceptor (By similarity). May play a role downstream of p53/TP53 to interface apoptosis and cell cycle progression. Indirectly involved in exosome secretion by facilitating the secretion of proteins such as TCTP.,induction:By p53/TP53.,similarity:Belongs to the STEAP family.,similarity:Contains 1 ferric oxidoreductase domain.,subcellular location:Localizes to vesicular-like structures at the plasma membrane and around the nucleus.,su



## Background

STEAP3 metalloreductase(STEAP3) Homo sapiens This gene encodes a multipass membrane protein that functions as an iron transporter. The encoded protein can reduce both iron (Fe<sup>3+</sup>) and copper (Cu<sup>2+</sup>) cations. This protein may mediate downstream responses to p53, including promoting apoptosis. Deficiency in this gene can cause anemia. Alternative splicing results in multiple transcript variants. [provided by RefSeq, Aug 2015],

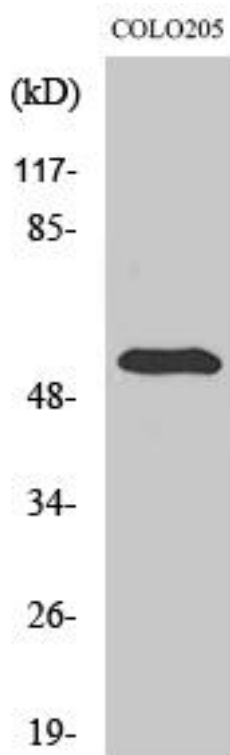
## matters needing attention

Avoid repeated freezing and thawing!

## Usage suggestions

This product can be used in immunological reaction related experiments. For more information, please consult technical personnel.

## Products Images



Western Blot analysis of various cells using pHye Monoclonal Antibody