

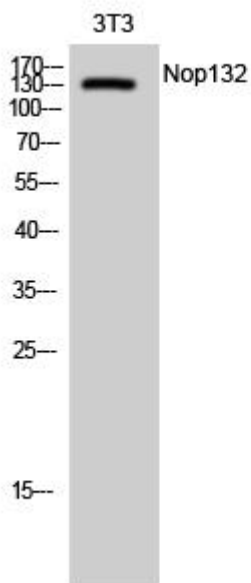


Nop132 Monoclonal Antibody

Catalog No	YP-mAb-00464
Isotype	IgG
Reactivity	Human;Rat;Mouse;
Applications	WB
Gene Name	NOL8
Protein Name	Nucleolar protein 8
Immunogen	The antiserum was produced against synthesized peptide derived from human NOL8. AA range:1118-1167
Specificity	Nop132 Monoclonal Antibody detects endogenous levels of Nop132 protein.
Formulation	Liquid in PBS containing 50% glycerol, 0.5% BSA and 0.02% sodium azide.
Source	Monoclonal, Mouse,IgG
Purification	The antibody was affinity-purified from mouse antiserum by affinity-chromatography using epitope-specific immunogen.
Dilution	WB 1:500-1:2000
Concentration	1 mg/ml
Purity	≥90%
Storage Stability	-20°C/1 year
Synonyms	NOL8; C9orf34; NOP132; Nucleolar protein 8; Nucleolar protein Nop132
Observed Band	130kD
Cell Pathway	Nucleus, nucleolus . Localizes in the nucleolar-organizing region during ribosome biogenesis.
Tissue Specificity	Expressed in various diffuse-type gastric cancers. Detected at lower levels in skeletal muscle.
Function	function:Plays an essential role in the survival of diffuse-type gastric cancer cells. May be involved in regulation of gene expression at the post-transcriptional level or in ribosome biogenesis in cancer cells.,induction:Up-regulated in diffuse-type gastric cancers.,PTM:Phosphorylated.,similarity:Contains 1 RRM (RNA recognition motif) domain.,subunit:Interacts with the GTP form of RRAGA, RRAGC and RRAGD. Interacts with NIP7.,tissue specificity:Expressed in various diffuse-type gastric cancers. Detected at lower levels in skeletal muscle.,
Background	NOL8 binds Ras-related GTP-binding proteins (see MIM 608267) and plays a role in cell growth (Sekiguchi et al., 2004 [PubMed 14660641]).[supplied by OMIM, Mar 2008],
matters needing attention	Avoid repeated freezing and thawing!

**Usage suggestions**

This product can be used in immunological reaction related experiments. For more information, please consult technical personnel.

Products Images

Western Blot analysis of various cells using Nop132 Monoclonal Antibody