

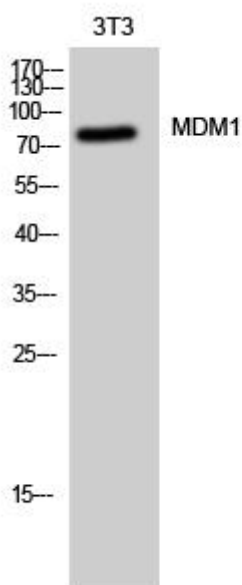


# MDM1 Monoclonal Antibody

<b>Catalog No</b>	YP-mAb-00443
<b>Isotype</b>	IgG
<b>Reactivity</b>	Human;Mouse;Rat
<b>Applications</b>	WB
<b>Gene Name</b>	MDM1
<b>Protein Name</b>	Nuclear protein MDM1
<b>Immunogen</b>	The antiserum was produced against synthesized peptide derived from human MDM1. AA range:665-714
<b>Specificity</b>	MDM1 Monoclonal Antibody detects endogenous levels of MDM1 protein.
<b>Formulation</b>	Liquid in PBS containing 50% glycerol, 0.5% BSA and 0.02% sodium azide.
<b>Source</b>	Monoclonal, Mouse,IgG
<b>Purification</b>	The antibody was affinity-purified from mouse antiserum by affinity-chromatography using epitope-specific immunogen.
<b>Dilution</b>	WB 1:500-1:2000
<b>Concentration</b>	1 mg/ml
<b>Purity</b>	≥90%
<b>Storage Stability</b>	-20°C/1 year
<b>Synonyms</b>	MDM1; Nuclear protein MDM1
<b>Observed Band</b>	80kD
<b>Cell Pathway</b>	Nucleus . Cytoplasm, cytoskeleton, microtubule organizing center, centrosome . Cytoplasm, cytoskeleton, microtubule organizing center, centrosome, centriole . Localizes to the centriole lumen. .
<b>Tissue Specificity</b>	Brain,Epithelium,Prostate,Testis,Trachea,
<b>Function</b>	similarity:Belongs to the MDM1 family.,
<b>Background</b>	This gene encodes a nuclear protein similar to the mouse double minute 1 protein. The mouse gene is located in double minute (DM) chromatin particles, is amplified in the mouse transformed 3T3 cell line, and the encoded protein is able to bind to p53. Alternatively spliced transcript variants encoding different isoforms have been found for this gene. [provided by RefSeq, Mar 2011],
<b>matters needing attention</b>	Avoid repeated freezing and thawing!
<b>Usage suggestions</b>	This product can be used in immunological reaction related experiments. For more information, please consult technical personnel.



## Products Images



Western Blot analysis of various cells using MDM1 Monoclonal Antibody