



# MALT1 Monoclonal Antibody

<b>Catalog No</b>	YP-mAb-00438
<b>Isotype</b>	IgG
<b>Reactivity</b>	Human;Mouse
<b>Applications</b>	WB
<b>Gene Name</b>	MALT1
<b>Protein Name</b>	Mucosa-associated lymphoid tissue lymphoma translocation protein 1
<b>Immunogen</b>	The antiserum was produced against synthesized peptide derived from human MALT1. AA range:301-350
<b>Specificity</b>	MALT1 Monoclonal Antibody detects endogenous levels of MALT1 protein.
<b>Formulation</b>	Liquid in PBS containing 50% glycerol, 0.5% BSA and 0.02% sodium azide.
<b>Source</b>	Monoclonal, Mouse,IgG
<b>Purification</b>	The antibody was affinity-purified from mouse antiserum by affinity-chromatography using epitope-specific immunogen.
<b>Dilution</b>	WB 1:500-1:2000
<b>Concentration</b>	1 mg/ml
<b>Purity</b>	≥90%
<b>Storage Stability</b>	-20°C/1 year
<b>Synonyms</b>	MALT1; MLT; Mucosa-associated lymphoid tissue lymphoma translocation protein 1; MALT lymphoma-associated translocation; Paracaspase
<b>Observed Band</b>	90kD
<b>Cell Pathway</b>	Cytoplasm, perinuclear region . Nucleus . Shuttles between the nucleus and cytoplasm. Found in perinuclear structures together with BCL10. .
<b>Tissue Specificity</b>	Highly expressed in peripheral blood mononuclear cells. Detected at lower levels in bone marrow, thymus and lymph node, and at very low levels in colon and lung.
<b>Function</b>	disease:A chromosomal aberration involving MALT1 is recurrent in low-grade mucosa-associated lymphoid tissue (MALT lymphoma). Translocation t(11;18)(q21;q21) with BIRC2. This translocation is found in approximately 50% of cytogenetically abnormal low-grade MALT lymphoma.,function:Enhances BCL10-induced activation of NF-kappa-B. Involved in nuclear export of BCL10. Binds to TRAF6, inducing TRAF6 oligomerization and activation of its ligase activity. Has ubiquitin ligase activity. MALT1-dependent BCL-10 cleavage plays an important role in T-cell antigen receptor-induced integrin adhesion.,similarity:Belongs to the peptidase C14B family.,similarity:Contains 1 death domain.,similarity:Contains 2 Ig-like C2-type (immunoglobulin-like) domains.,subcellular location:Shuttles between the nucleus and cytoplasm. Found in perinuclear structures together with BCL10.,subunit:Binds through its Ig-like



## Background

This gene has been found to be recurrently rearranged in chromosomal translocation with two other genes - baculoviral IAP repeat-containing protein 3 (also known as apoptosis inhibitor 2) and immunoglobulin heavy chain locus - in mucosa-associated lymphoid tissue lymphomas. The protein encoded by this gene may play a role in NF-kapMAB activation. Two alternatively spliced transcript variants encoding different isoforms have been described for this gene. [provided by RefSeq, Jul 2008],

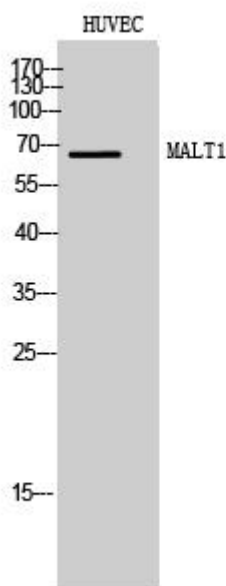
## matters needing attention

Avoid repeated freezing and thawing!

## Usage suggestions

This product can be used in immunological reaction related experiments. For more information, please consult technical personnel.

## Products Images



Western Blot analysis of various cells using MALT1 Monoclonal Antibody