

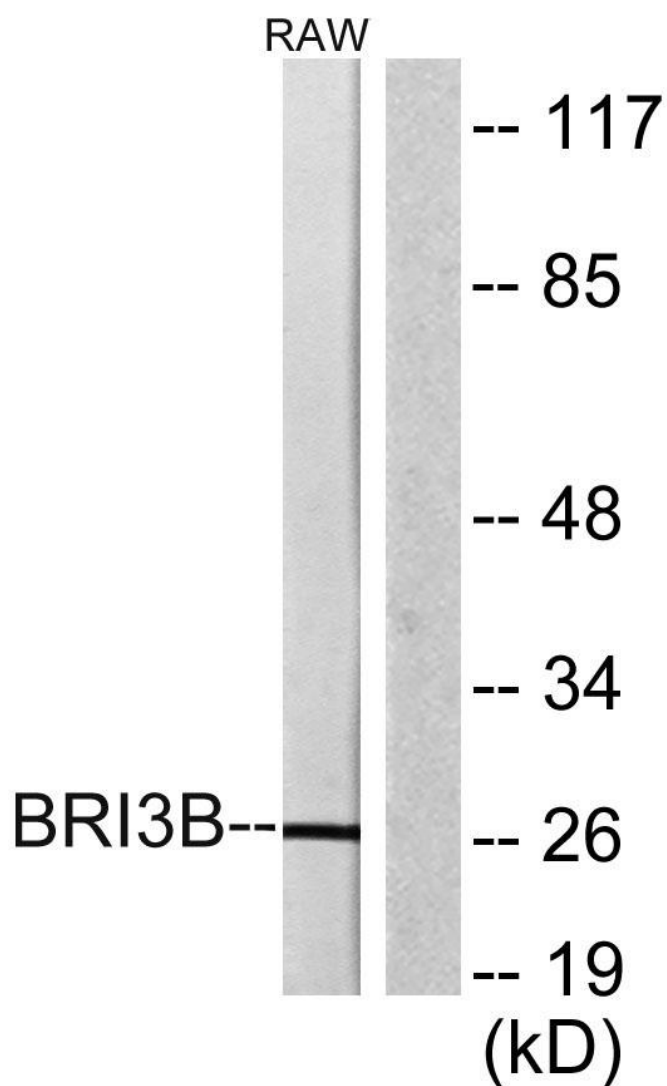


KG19 Monoclonal Antibody

Catalog No	YP-mAb-00423
Isotype	IgG
Reactivity	Human;Mouse
Applications	WB
Gene Name	BRI3BP
Protein Name	BRI3-binding protein
Immunogen	The antiserum was produced against synthesized peptide derived from human BRI3B. AA range:1-50
Specificity	KG19 Monoclonal Antibody detects endogenous levels of KG19 protein.
Formulation	Liquid in PBS containing 50% glycerol, 0.5% BSA and 0.02% sodium azide.
Source	Monoclonal, Mouse,IgG
Purification	The antibody was affinity-purified from mouse antiserum by affinity-chromatography using epitope-specific immunogen.
Dilution	WB 1:500-1:2000
Concentration	1 mg/ml
Purity	≥90%
Storage Stability	-20°C/1 year
Synonyms	BRI3BP; KG19; BRI3-binding protein; I3-binding protein; Cervical cancer 1 proto-oncogene-binding protein KG19; HCCRBP-1
Observed Band	27kD
Cell Pathway	Mitochondrion outer membrane ; Multi-pass membrane protein .
Tissue Specificity	Most abundantly expressed in brain, liver and kidney (PubMed:11860200). Overexpressed in leukemia and lymphoma cell lines, as well as in various carcinomas (PubMed:17943721).
Function	tissue specificity:Most abundantly expressed in brain, liver and kidney.,
Background	tissue specificity:Most abundantly expressed in brain, liver and kidney.,
matters needing attention	Avoid repeated freezing and thawing!
Usage suggestions	This product can be used in immunological reaction related experiments. For more information, please consult technical personnel.



Products Images



Western Blot analysis of various cells using KG19
Monoclonal Antibody