

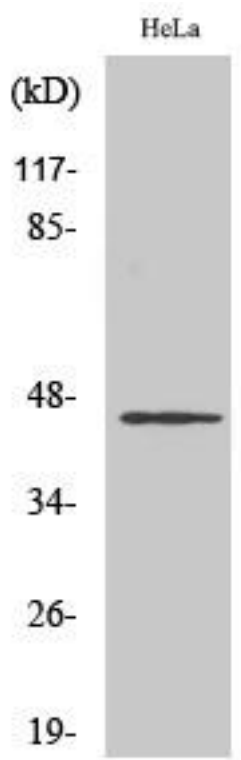


HORMAD1 Monoclonal Antibody

Catalog No	YP-mAb-00421
Isotype	IgG
Reactivity	Human;Rat;Mouse;
Applications	WB
Gene Name	HORMAD1
Protein Name	HORMA domain-containing protein 1
Immunogen	The antiserum was produced against synthesized peptide derived from human HORMAD1. AA range:321-370
Specificity	HORMAD1 Monoclonal Antibody detects endogenous levels of HORMAD1 protein.
Formulation	Liquid in PBS containing 50% glycerol, 0.5% BSA and 0.02% sodium azide.
Source	Monoclonal, Mouse,IgG
Purification	The antibody was affinity-purified from mouse antiserum by affinity-chromatography using epitope-specific immunogen.
Dilution	WB 1:500-1:2000
Concentration	1 mg/ml
Purity	≥90%
Storage Stability	-20°C/1 year
Synonyms	HORMAD1; NOHMA; HORMA domain-containing protein 1; Cancer/testis antigen 46; CT46; Newborn ovary HORMA protein
Observed Band	45kD
Cell Pathway	Nucleus . Chromosome . Preferentially localizes to unsynapsed or desynapsed chromosomal regions during the prophase I stage of meiosis. TRIP13 is required for depletion from synapsed chromosomes. The expression of the phosphorylated form at Ser-377 is restricted to unsynapsed chromosomal regions (By similarity). .
Tissue Specificity	Testis-specific. Over-expressed in carcinomas.
Function	similarity:Contains 1 HORMA domain.,tissue specificity:Testis-specific. Over-expressed in carcinomas.,
Background	This gene encodes a HORMA domain-containing protein. HORMA domains are involved in chromatin binding and play a role in cell cycle regulation. The encoded protein may play a role in meiosis, and expression of this gene is a potential marker for cancer. A pseudogene of this gene is located on the long arm of chromosome 6. Alternatively spliced transcript variants encoding multiple isoforms have been observed for this gene. [provided by RefSeq, Dec 2010],
matters needing attention	Avoid repeated freezing and thawing!

**Usage suggestions**

This product can be used in immunological reaction related experiments. For more information, please consult technical personnel.

Products Images

Western Blot analysis of various cells using HORMAD1 Monoclonal Antibody