



Granzyme K Monoclonal Antibody

Catalog No	YP-mAb-00418
Isotype	IgG
Reactivity	Human;Mouse;Rat
Applications	WB
Gene Name	GZMK
Protein Name	Granzyme K
Immunogen	The antiserum was produced against synthesized peptide derived from human GRAK. AA range:61-110
Specificity	Granzyme K Monoclonal Antibody detects endogenous levels of Granzyme K protein.
Formulation	Liquid in PBS containing 50% glycerol, 0.5% BSA and 0.02% sodium azide.
Source	Monoclonal, Mouse,IgG
Purification	The antibody was affinity-purified from mouse antiserum by affinity-chromatography using epitope-specific immunogen.
Dilution	WB 1:500-1:2000
Concentration	1 mg/ml
Purity	≥90%
Storage Stability	-20°C/1 year
Synonyms	GZMK; TRYP2; Granzyme K; Fragmentin-3; Granzyme-3; NK-tryptase-2; NK-Tryp-2
Observed Band	33kD
Cell Pathway	Secreted. Cytoplasmic granule.
Tissue Specificity	Expressed in lung, spleen, thymus and peripheral blood leukocytes.
Function	similarity:Belongs to the peptidase S1 family. Granzyme subfamily.,similarity:Contains 1 peptidase S1 domain.,tissue specificity:Expressed in lung, spleen, thymus and peripheral blood leukocytes.,
Background	This gene product is a member of a group of related serine proteases from the cytoplasmic granules of cytotoxic lymphocytes. Cytolytic T lymphocytes (CTL) and natural killer (NK) cells share the remarkable ability to recognize, bind, and lyse specific target cells. They are thought to protect their host by lysing cells bearing on their surface ‘nonself’ antigens, usually peptides or proteins resulting from infection by intracellular pathogens. The protein described here lacks consensus sequences for N-glycosylation present in other granzymes. [provided by RefSeq, Jul 2008],



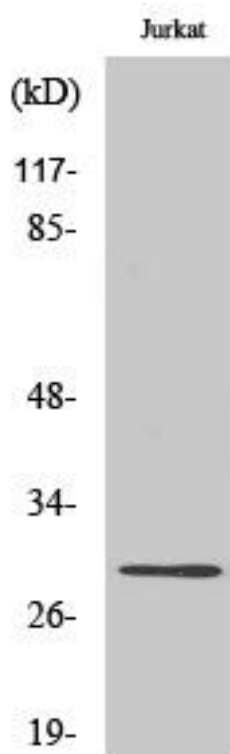
matters needing attention

Avoid repeated freezing and thawing!

Usage suggestions

This product can be used in immunological reaction related experiments. For more information, please consult technical personnel.

Products Images



Western Blot analysis of various cells using Granzyme K Monoclonal Antibody