



# DBC-1 Monoclonal Antibody

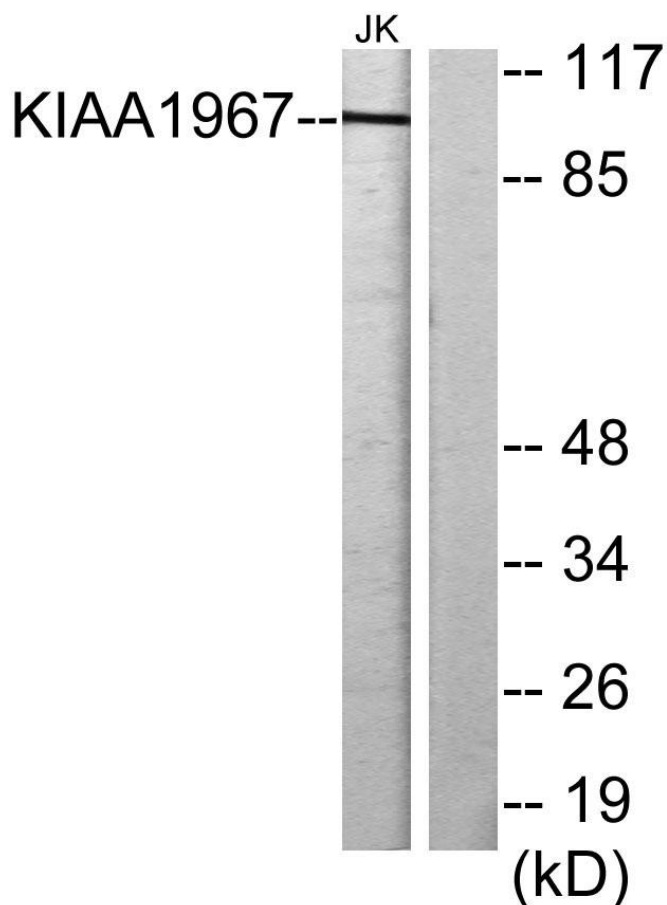
|                                  |   |
|----------------------------------|---|
| <b>Catalog No</b>                | YP-mAb-00372  |
| <b>Isotype</b>                   | IgG   |
| <b>Reactivity</b>                | Human;Rat;Mouse;  |
| <b>Applications</b>              | WB  |
| <b>Gene Name</b>                 | KIAA1967  |
| <b>Protein Name</b>              | DBIRD complex subunit KIAA1967  |
| <b>Immunogen</b>                 | The antiserum was produced against synthesized peptide derived from human KIAA1967. AA range:431-480  |
| <b>Specificity</b>               | DBC-1 Monoclonal Antibody detects endogenous levels of DBC-1 protein.   |
| <b>Formulation</b>               | Liquid in PBS containing 50% glycerol, 0.5% BSA and 0.02% sodium azide.   |
| <b>Source</b>                    | Monoclonal, Mouse,IgG   |
| <b>Purification</b>              | The antibody was affinity-purified from mouse antiserum by affinity-chromatography using epitope-specific immunogen.  |
| <b>Dilution</b>                  | WB 1:500-1:2000   |
| <b>Concentration</b>             | 1 mg/ml   |
| <b>Purity</b>                    | ≥90%  |
| <b>Storage Stability</b>         | -20°C/1 year  |
| <b>Synonyms</b>                  | KIAA1967; DBC1; DBIRD complex subunit KIAA1967; Deleted in breast cancer gene 1 protein; DBC-1; DBC.1; p30 DBC  |
| <b>Observed Band</b>             | 102kD   |
| <b>Cell Pathway</b>              | Nucleus . Cytoplasm . Cytoplasm, cytoskeleton, spindle . Recruited to chromatin, post-UV irradiation. Sequestered to the cytoplasm in the presence of MCC. Translocated to the cytoplasm during UV-induced apoptosis. .                                 |
| <b>Tissue Specificity</b>        | Expressed in gastric carcinoma tissue and the expression gradually increases with the progression of the carcinoma (at protein level). Expressed ubiquitously in normal tissues. Expressed in 84 to 100% of neoplastic breast, lung, and colon tissues. |
| <b>Function</b>                  | tissue specificity:Expressed ubiquitously in normal tissues. Expressed in 84 to 100% of neoplastic breast, lung, and colon tissues.,  |
| <b>Background</b>                | tissue specificity:Expressed ubiquitously in normal tissues. Expressed in 84 to 100% of neoplastic breast, lung, and colon tissues.,  |
| <b>matters needing attention</b> | Avoid repeated freezing and thawing!  |



### Usage suggestions

This product can be used in immunological reaction related experiments. For more information, please consult technical personnel.

### Products Images



Western Blot analysis of various cells using DBC-1 Monoclonal Antibody