



# D54 Monoclonal Antibody

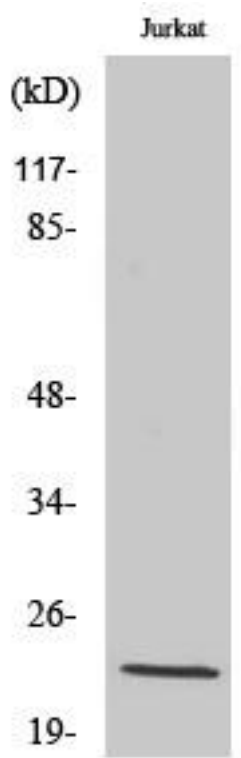
|                                  |   |
|----------------------------------|---|
| <b>Catalog No</b>                | YP-mAb-00367  |
| <b>Isotype</b>                   | IgG   |
| <b>Reactivity</b>                | Human;Mouse;Rat   |
| <b>Applications</b>              | WB  |
| <b>Gene Name</b>                 | TPD52L2   |
| <b>Protein Name</b>              | Tumor protein D54   |
| <b>Immunogen</b>                 | The antiserum was produced against synthesized peptide derived from human TPD54. AA range:141-190   |
| <b>Specificity</b>               | D54 Monoclonal Antibody detects endogenous levels of D54 protein.   |
| <b>Formulation</b>               | Liquid in PBS containing 50% glycerol, 0.5% BSA and 0.02% sodium azide.   |
| <b>Source</b>                    | Monoclonal, Mouse,IgG   |
| <b>Purification</b>              | The antibody was affinity-purified from mouse antiserum by affinity-chromatography using epitope-specific immunogen.  |
| <b>Dilution</b>                  | WB 1:500-1:2000   |
| <b>Concentration</b>             | 1 mg/ml   |
| <b>Purity</b>                    | ≥90%  |
| <b>Storage Stability</b>         | -20°C/1 year  |
| <b>Synonyms</b>                  | TPD52L2; Tumor protein D54; hD54; Tumor protein D52-like 2  |
| <b>Observed Band</b>             | 22kD  |
| <b>Cell Pathway</b>              | cytoplasm,perinuclear region of cytoplasm,  |
| <b>Tissue Specificity</b>        | Cord blood,Endometrium,Epithelium,Mammary gland,Placenta,Thyroid,Tongue,  |
| <b>Function</b>                  | alternative products:Additional isoforms seem to exist,similarity:Belongs to the TPD52 family.,subunit:Forms homodimer or heterodimer with other members of the family (By similarity). Interacts with MAL2.,   |
| <b>Background</b>                | This gene encodes a member of the tumor protein D52-like family. These proteins are characterized by an N-terminal coiled-coil motif that is used to form homo- and heteromeric complexes with other tumor protein D52-like proteins. Expression of this gene may be a marker for breast cancer and acute lymphoblastic leukemia. Alternatively spliced transcript variants encoding multiple isoforms have been observed for this gene, and a pseudogene of this gene is located on the long arm of chromosome 12. [provided by RefSeq, Aug 2011], |
| <b>matters needing attention</b> | Avoid repeated freezing and thawing!  |



### Usage suggestions

This product can be used in immunological reaction related experiments. For more information, please consult technical personnel.

### Products Images



Western Blot analysis of various cells using D54 Monoclonal Antibody